

# Gemin 2 Rabbit mAb

货号: B29300

产品信息

反应	Human,Mouse,Rat
宿主	Rabbit
克隆性	Monoclonal
预测反应	
应用	WB IP
推荐浓度	<b>WB:</b> 1:500 - 1:2000 <b>IP:</b> 1:20 - 1:50
理论分子量	4kDa/28kDa/29kDa/31kDa
实测分子量	31kDa
形式	Liquid
保存条件	Store at -20°C. Avoid freeze / thaw cycles. Buffer: PBS with 0.75% BSA,50% glycerol,pH7.3.
偶联物	Unconjugated
阳性对照	Jurkat
细胞定位	Cytoplasm,Nucleus,gem
纯化	Affinity purification

抗原信息

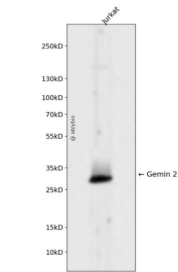
抗原信息	Recombinant fusion protein corresponding to Human Gemin 2.
序列	NWFGERDFTPELGRWLYALLACLEKPLLPEAHSLIRQLARRCSEVRLLVDSKDDDERVPALNLLICLVSRYFDQRDLADEPS

靶点信息

研究背景	This gene encodes one of the proteins found in the SMN complex, which consists of several gemin protein s and the protein known as the survival of motor neuron protein. The SMN complex is localized to a subnu clear compartment called gems (gemini of coiled bodies) and is required for assembly of spliceosomal sn RNPs and for pre-mRNA splicing. This protein interacts directly with the survival of motor neuron protein a nd it is required for formation of the SMN complex. A knockout mouse targeting the mouse homolog of thi s gene exhibited disrupted snRNP assembly and motor neuron degeneration.
基因ID	8487

基因名	GEMIN2
Swiss	O14893
别名	GEMIN2;SIP1;SIP1-delta

产品验证



Western blot analysis of Gemin 2 expressed in Jurkat using Gemin 2 Rabbit mAb at 1:1000. Secondary antibody: HRP Goat Anti-Rabbit IgG (H+L) at 1:5000. Lysates/proteins: 30ug per lane. Blocking buffer: 5% non-fat dry milk in TBST. Detection: ECL Enhanced Kit. Exposure time: 120s.

实验步骤

访问官网浏览详情: [www.ablybio.cn](http://www.ablybio.cn)