

Integrin alpha 6 Rabbit mAb

货号: B29278

产品信息

| | |
|-------|---|
| 反应 | Human,Mouse,Rat |
| 宿主 | Rabbit |
| 克隆性 | Monoclonal |
| 预测反应 | |
| 应用 | WB IHC |
| 推荐浓度 | WB: 1:500 - 1:2000 IHC: 1:50 - 1:200 |
| 理论分子量 | 127kDa |
| 实测分子量 | 127kDa |
| 形式 | Liquid |
| 保存条件 | Store at -20°C. Avoid freeze / thaw cycles. Buffer: PBS with 0.75% BSA,50% glycerol,pH7.3. |
| 偶联物 | Unconjugated |
| 阳性对照 | A-431 |
| 细胞定位 | Cell membrane,Lipid-anchor,Single-pass type I membrane protein |
| 纯化 | Affinity purification |

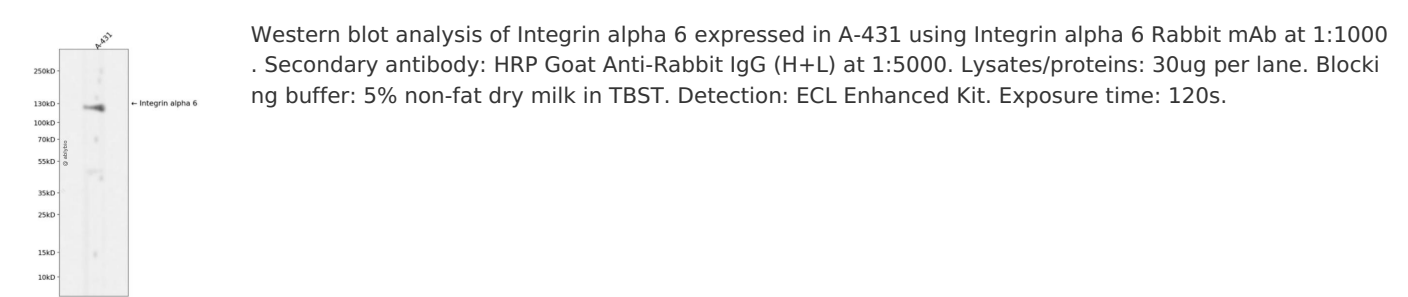
抗原信息

| | |
|------|--|
| 抗原信息 | Recombinant fusion protein corresponding to Human Integrin alpha 6. |
| 序列 | IDLRQKTACGAPSGICLQVKSCFEYTANPAGYNPSISIVGTLEAEKERRKSGLSSRVQFRNQGSEPKYTQELTLKRQKQKVC MEETLWLQDNIRDKLRPIITASVEIQEP |

靶点信息

| | |
|-------|---|
| 研究背景 | The gene encodes a member of the integrin alpha chain family of proteins. Integrins are heterodimeric integral membrane proteins composed of an alpha chain and a beta chain that function in cell surface adhesion and signaling. The encoded preproprotein is proteolytically processed to generate light and heavy chains that comprise the alpha 6 subunit. This subunit may associate with a beta 1 or beta 4 subunit to form an integrin that interacts with extracellular matrix proteins including members of the laminin family. The alpha 6 beta 4 integrin may promote tumorigenesis, while the alpha 6 beta 1 integrin may negatively regulate erbB2/HER2 signaling. Alternative splicing results in multiple transcript variants. [provided by RefSeq, Oct 2015] |
| 基因ID | 3655 |
| 基因名 | ITGA6 |
| Swiss | P23229 |
| 别名 | CD49f;ITGA6B;VLA-6;Integrin alpha 6;ITGA6 |

产品验证



实验步骤

访问官网浏览详情: www.ablybio.cn