

c-Rel Rabbit mAb

货号: **B29273**

产品信息

反应	Human
宿主	Rabbit
克隆性	Monoclonal
预测反应	
应用	WB IP
推荐浓度	WB: 1:500 - 1:2000 IP: 1:20 - 1:50
理论分子量	65kDa/68kDa
实测分子量	68kDa
形式	Liquid
保存条件	Store at -20°C. Avoid freeze / thaw cycles. Buffer: PBS with 0.75% BSA,50% glycerol,pH7.3.
偶联物	Unconjugated
阳性对照	Raji,U-937,A-431,Mouse spleen,Mouse thymus,Rat thymus,Rat lung
细胞定位	Nucleus
纯化	Affinity purification

抗原信息

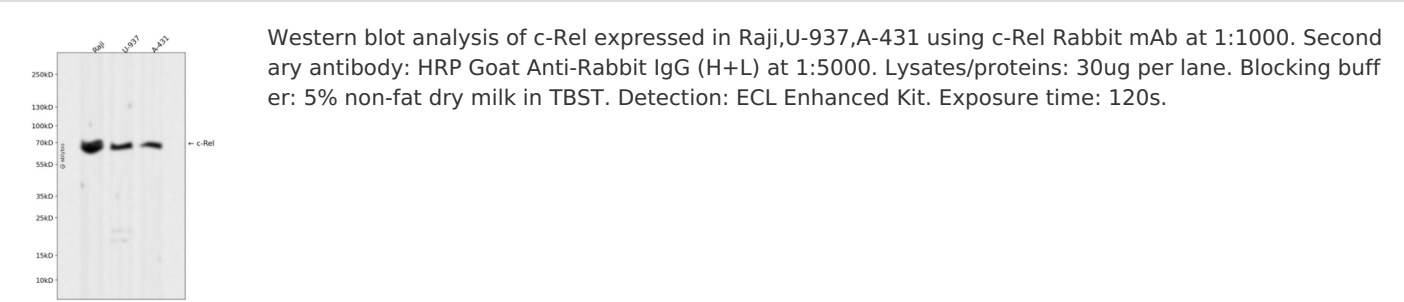
抗原信息	Recombinant fusion protein corresponding to Human c-Rel .
序列	STDNNRTYPSIQIMNYYGKGKVRITLVTKNDPYKPHPHDLVGKDCRDGYEAEFGQERRPLFFQNLGIRCVKKKEVKEAII TRIKAGINPFNVPEKQLNDIEDCDLNVVRLCFQVFLPDEHGNTTALPPVVSNNPIYDNRA

靶点信息

研究背景	This gene encodes a protein that belongs to the Rel homology domain/immunoglobulin-like fold, plexin, tr anscription factor (RHD/IPT) family. Members of this family regulate genes involved in apoptosis, inflamm ation, the immune response, and oncogenic processes. This proto-oncogene plays a role in the survival an d proliferation of B lymphocytes. Mutation or amplification of this gene is associated with B-cell lymphom as, including Hodgkin's lymphoma. Single nucleotide polymorphisms in this gene are associated with susc eptibility to ulcerative colitis and rheumatoid arthritis. Alternative splicing results in multiple transcript va riants encoding different isoforms.
------	--

基因ID	5966
基因名	REL
Swiss	Q04864
别名	REL;C-Rel

产品验证



实验步骤

访问官网浏览详情: www.ablybio.cn