

# L1CAM Rabbit mAb

货号: B29270

产品信息

反应	Human
宿主	Rabbit
克隆性	Monoclonal
预测反应	
应用	WB IHC
推荐浓度	<b>WB:</b> 1:500 - 1:2000 <b>IHC:</b> 1:50 - 1:200
理论分子量	138kDa/139kDa/140kDa
实测分子量	85,250kDa
形式	Liquid
保存条件	Store at -20°C. Avoid freeze / thaw cycles. Buffer: PBS with 0.75% BSA,50% glycerol,pH7.3.
偶联物	Unconjugated
阳性对照	
细胞定位	Cell membrane,Cell projection,Single-pass type I membrane protein,growth cone
纯化	Affinity purification

抗原信息

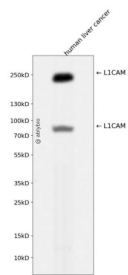
抗原信息	Recombinant fusion protein corresponding to Human L1CAM.
序列	

靶点信息

研究背景	The protein encoded by this gene is an axonal glycoprotein belonging to the immunoglobulin supergene family. The ectodomain, consisting of several immunoglobulin-like domains and fibronectin-like repeats (type III), is linked via a single transmembrane sequence to a conserved cytoplasmic domain. This cell adhesion molecule plays an important role in nervous system development, including neuronal migration and differentiation. Mutations in the gene cause X-linked neurological syndromes known as CRASH (corpus callosum hypoplasia, retardation, aphasia, spastic paraplegia and hydrocephalus). Alternative splicing of this gene results in multiple transcript variants, some of which include an alternate exon that is considered to be specific to neurons.
------	---

基因ID	3897
基因名	L1CAM
Swiss	P32004
别名	L1CAM;CAML1;CD171;HSAS;HSAS1;MASA;MIC5;N-CAM-L1;N-CAML1;NCAM-L1;S10;SPG1

产品验证



Western blot analysis of L1CAM expressed in human liver cancer using L1CAM Rabbit mAb at 1:1000. Secondary antibody: HRP Goat Anti-Rabbit IgG (H+L) at 1:5000. Lysates/proteins: 30ug per lane. Blocking buffer: 5% non-fat dry milk in TBST. Detection: ECL Enhanced Kit. Exposure time: 120s.

实验步骤

访问官网浏览详情: [www.ablybio.cn](http://www.ablybio.cn)