

# MEF2C Rabbit mAb

货号: B29220

产品信息

反应	Human,Rat
宿主	Rabbit
克隆性	Monoclonal
预测反应	
应用	WB IHC
推荐浓度	<b>WB:</b> 1:500 - 1:2000 <b>IHC:</b> 1:50 - 1:200
理论分子量	44kDa/47kDa/50kDa/51kDa/52kDa
实测分子量	50-60kDa
形式	Liquid
保存条件	Store at -20°C. Avoid freeze / thaw cycles. Buffer: PBS with 0.75% BSA,50% glycerol,pH7.3.
偶联物	Unconjugated
阳性对照	Jurkat,NIH/3T3,293T,HeLa,Mouse skeletal muscle
细胞定位	Nucleus
纯化	Affinity purification

抗原信息

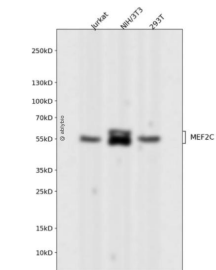
抗原信息	Recombinant fusion protein corresponding to Human MEF2C.
序列	DRTTTPSRYPQHTRHEAGRSPVDSLSSCSSSYDGSDREDHRNEFHSPIGLTRPSPDERESPSVKRMRLSEGWAT

靶点信息

研究背景	This locus encodes a member of the MADS box transcription enhancer factor 2 (MEF2) family of proteins, which play a role in myogenesis. The encoded protein, MEF2 polypeptide C, has both trans-activating and DNA binding activities. This protein may play a role in maintaining the differentiated state of muscle cells. Mutations and deletions at this locus have been associated with severe mental retardation, stereotypic movements, epilepsy, and cerebral malformation. Alternatively spliced transcript variants have been described.
基因ID	4208

基因名	MEF2C
Swiss	Q06413
别名	MEF2C;C5DELq14.3;DEL5q14.3

产品验证



Western blot analysis of MEF2C expressed in Jurkat,NIH/3T3,293T using MEF2C Rabbit mAb at 1:1000. Secondary antibody: HRP Goat Anti-Rabbit IgG (H+L) at 1:5000. Lysates/proteins: 30ug per lane. Blocking buffer: 5% non-fat dry milk in TBST. Detection: ECL Enhanced Kit. Exposure time: 120s.

实验步骤

访问官网浏览详情: [www.ablybio.cn](http://www.ablybio.cn)