

# ATF5 Rabbit mAb

货号: B29203

产品信息

反应	Human,Mouse,Rat
宿主	Rabbit
克隆性	Monoclonal
预测反应	
应用	WB IHC IF/ICC IP
推荐浓度	<b>WB:</b> 1:500 - 1:2000 <b>IHC:</b> 1:50 - 1:200 <b>IF/ICC:</b> 1:50 - 1:200 <b>IP:</b> 1:20 - 1:50
理论分子量	30kDa
实测分子量	31kDa
形式	Liquid
保存条件	Store at -20°C. Avoid freeze / thaw cycles. Buffer: PBS with 0.75% BSA,50% glycerol,pH7.3.
偶联物	Unconjugated
阳性对照	rat lung
细胞定位	centrosome,cytosol,nucleoplasm,nucleus
纯化	Affinity purification

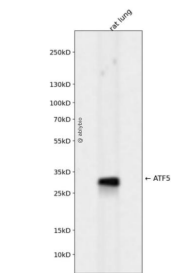
抗原信息

抗原信息	Recombinant fusion protein corresponding to Human ATF5.
序列	MASLLKKELEQMEDFFLDAPPLPPPSPPPLPPPLPPAPSLPLSLPSFDLPQPPVLDTLDLLAIYCRNEAGQEEVGMPPPLPPQ QPPPPSPPPQSRLAPYPHPATTRGDRKQKKRDQNKSAALRYRQRKRAEGEAGEGECQGLEARNRELKERAESVEREIQYVK DLLIEVYKARSQRTRSC

靶点信息

研究背景	Transcription factor that either stimulates or represses gene transcription through binding of different DNA regulatory elements such as cAMP response element (CRE (consensus: 5'-GTGACGT[AC][AG]-3', ATF5-specific response element (ARE (consensus: 5'-C[CT]TCT[CT]CCTT[AT]-3' but also the amino acid response element (AARE, present in many viral and cellular promoters. Critically involved, often in a cell type-dependent manner, in cell survival, proliferation, and differentiation. Its transcriptional activity is enhanced by CCND3 and slightly inhibited by CDK4. Important regulator of the cerebral cortex formation, functions in cerebral cortical neuroprogenitor cells to maintain proliferation and to block differentiation into neurons. Must be down-regulated in order for such cells to exit the cycle and differentiate (By similarity. Participates in the pathways by which SHH promotes cerebellar granule neuron progenitor cells proliferation (By similarity. Critical for survival of mature olfactory sensory neurons (OSN, directs expression of OSN-specific genes (By similarity.
基因ID	22809
基因名	ATF5
Swiss	Q9Y2D1
别名	ATFX;HMFN0395;ATF5

产品验证



Western blot analysis of ATF5 expressed in rat lung using ATF5 Rabbit mAb at 1:1000. Secondary antibody: HRP Goat Anti-Rabbit IgG (H+L) at 1:5000. Lysates/proteins: 30ug per lane. Blocking buffer: 5% non-fat dry milk in TBST. Detection: ECL Enhanced Kit. Exposure time: 120s.

实验步骤

访问官网浏览详情: [www.ablybio.cn](http://www.ablybio.cn)