

# ATF1 Rabbit mAb

货号: B29201

## 产品信息

反应	Human
宿主	Rabbit
克隆性	Monoclonal
预测反应	
应用	WB IF/ICC IP
推荐浓度	<b>WB:</b> 1:500 - 1:2000 <b>IF/ICC:</b> 1:50 - 1:200 <b>IP:</b> 1:20 - 1:50
理论分子量	15kDa/29kDa
实测分子量	36kDa
形式	Liquid
保存条件	Store at -20°C. Avoid freeze / thaw cycles. Buffer: PBS with 0.75% BSA,50% glycerol,pH7.3.
偶联物	Unconjugated
阳性对照	HL-60,MCF7,HeLa,Mouse spleen,Mouse ovary,Mouse liver
细胞定位	Nucleus
纯化	Affinity purification

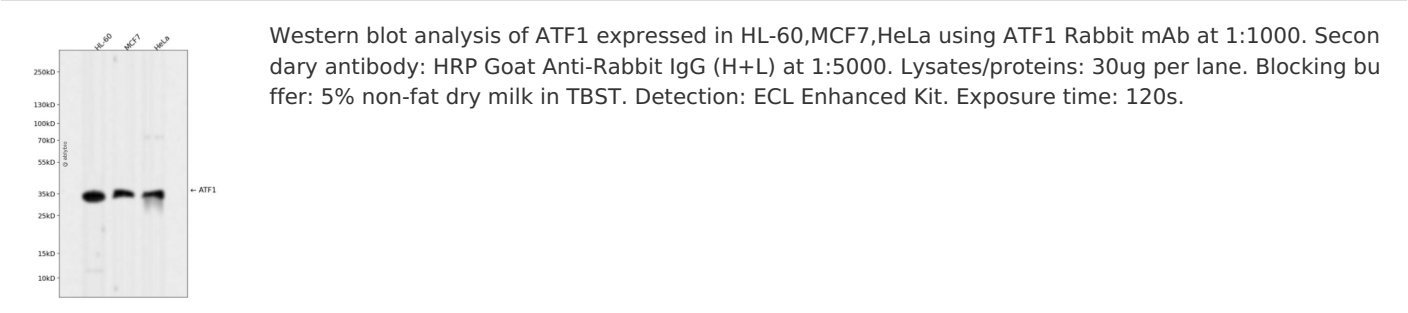
## 抗原信息

抗原信息	Recombinant fusion protein corresponding to Human ATF1.
序列	MEDSHKSTTSETAPQPGSAVQGAHISHIAQQVSSLSESEESQDSSDSIGSSQKAHGILARRPSYRKILKDLSSDTRGRKG DGENSGVSAAVTSMSVPTPIYQTSSGQYIAIAPNGALQLASPGTDGVQGLQTLMTNSGSTQQGTTILQYAQTS DGQQIL VPSNQVVVQTASGDMQTYQIRTTPSATSLPQTVVMTSPVTLTSQTTKTD

## 靶点信息

研究背景	This gene encodes an activating transcription factor, which belongs to the ATF subfamily and bZIP (basic-region leucine zipper) family. It influences cellular physiologic processes by regulating the expression of downstream target genes, which are related to growth, survival, and other cellular activities. This protein is phosphorylated at serine 63 in its kinase-inducible domain by serine/threonine kinases, cAMP-dependent protein kinase A, calmodulin-dependent protein kinase I/II, mitogen- and stress-activated protein kinase and cyclin-dependent kinase 3 (cdk-3). Its phosphorylation enhances its transactivation and transcriptional activities, and enhances cell transformation. Fusion of this gene and FUS on chromosome 16 or EWSR1 on chromosome 22 induced by translocation generates chimeric proteins in angiomatoid fibrous histiocytoma and clear cell sarcoma. This gene has a pseudogene on chromosome 6.
基因ID	466
基因名	ATF1
Swiss	P18846
别名	ATF1;EWS-ATF1;FUS/ATF-1;TREB36

产品验证



实验步骤

访问官网浏览详情: [www.ablybio.cn](http://www.ablybio.cn)