

Alcohol Dehydrogenase Rabbit mAb

货号: B29178

产品信息

反应	Human,Mouse,Rat
宿主	Rabbit
克隆性	Monoclonal
预测反应	
应用	WB IHC IF/ICC
推荐浓度	WB: 1:500 - 1:2000 IHC: 1:50 - 1:200 IF/ICC: 1:50 - 1:200
理论分子量	40kDa
实测分子量	40kDa
形式	Liquid
保存条件	Store at -20°C. Avoid freeze / thaw cycles. Buffer: PBS with 0.75% BSA,50% glycerol,pH7.3.
偶联物	Unconjugated
阳性对照	Mouse lung
细胞定位	cytosol,nucleoplasm,plasma membrane
纯化	Affinity purification

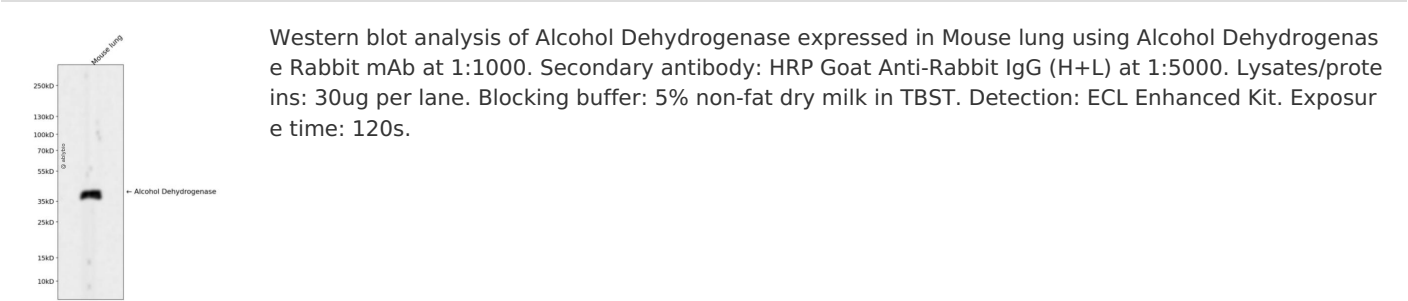
抗原信息

抗原信息	Recombinant fusion protein corresponding to Human Alcohol Dehydrogenase.
序列	MSTAGKVIKCKAAVLWELKKPFSIEEEVAPPKAHEVRIKMVAVGICGTDDHVSGTMVTPLPVILGHEAAGIVESVGEGVT TVKPGDKVIPLAIPQCGK

靶点信息

研究背景	This gene encodes a member of the alcohol dehydrogenase family. The encoded protein is the alpha subunit of class I alcohol dehydrogenase, which consists of several homo- and heterodimers of alpha, beta and gamma subunits. Alcohol dehydrogenases catalyze the oxidation of alcohols to aldehydes. This gene is active in the liver in early fetal life but only weakly active in adult liver. This gene is found in a cluster with six additional alcohol dehydrogenase genes, including those encoding the beta and gamma subunits, on the long arm of chromosome 4. Mutations in this gene may contribute to variation in certain personality traits and substance dependence. [provided by RefSeq, Nov 2010]
基因ID	124
基因名	ADH1A
Swiss	P07327
别名	ADH1

产品验证



实验步骤

访问官网浏览详情: www.ablybio.cn