

S100A10 Rabbit mAb

货号: B29123

产品信息

反应	Human,Mouse
宿主	Rabbit
克隆性	Monoclonal
预测反应	
应用	WB IHC
推荐浓度	WB: 1:500 - 1:2000 IHC: 1:50 - 1:200
理论分子量	11kDa
实测分子量	11kDa
形式	Liquid
保存条件	Store at -20°C. Avoid freeze / thaw cycles. Buffer: PBS with 0.75% BSA,50% glycerol,pH7.3.
偶联物	Unconjugated
阳性对照	A-549,U-87MG
细胞定位	cell surface,cytoplasm,extracellular exosome,extracellular region,extracellular space,nuclear matrix,plasma membrane protein complex
纯化	Affinity purification

抗原信息

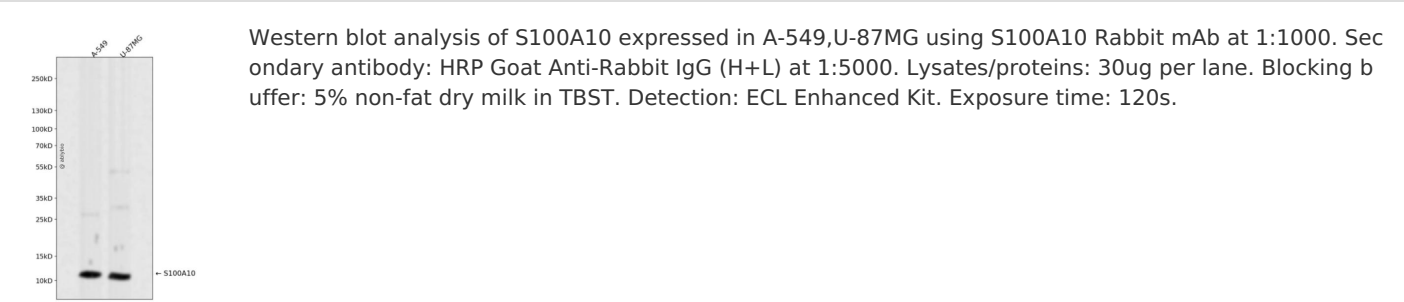
抗原信息	Recombinant fusion protein corresponding to Human S100A10.
序列	MPSQMEHAMETMMFTFHKFAGDKGYLTKEDLRVLMEKEFPGFLENQKDPLAVDKIMKDLDQCRDGKVGFSFFSLIAGLTIACNDYFVVHMKQKGKK

靶点信息

研究背景	The protein encoded by this gene is a member of the S100 family of proteins containing 2 EF-hand calcium-binding motifs. S100 proteins are localized in the cytoplasm and/or nucleus of a wide range of cells, and are involved in the regulation of a number of cellular processes such as cell cycle progression and differentiation. S100 genes include at least 13 members which are located as a cluster on chromosome 1q21. This protein may function in exocytosis and endocytosis. [provided by RefSeq, Jul 2008]
------	---

基因ID	6281
基因名	S100A10
Swiss	P60903
别名	42C; ANX2L; ANX2LG; CAL1L; CLP11; Ca[1]; GP11; P11; p10

产品验证



实验步骤

访问官网浏览详情: www.ablybio.cn