

NEDD8 Rabbit mAb

货号: B29055

产品信息

反应	Human,Mouse,Rat
宿主	Rabbit
克隆性	Monoclonal
预测反应	
应用	WB IHC IF/ICC IP
推荐浓度	WB: 1:500 - 1:2000 IHC: 1:50 - 1:200 IF/ICC: 1:50 - 1:200 IP: 1:20 - 1:50
理论分子量	9kDa
实测分子量	10,90kDa
形式	Liquid
保存条件	Store at -20°C. Avoid freeze / thaw cycles. Buffer: PBS with 0.75% BSA,50% glycerol,pH7.3.
偶联物	Unconjugated
阳性对照	Mouse brain,Rat brain
细胞定位	Nucleus
纯化	Affinity purification

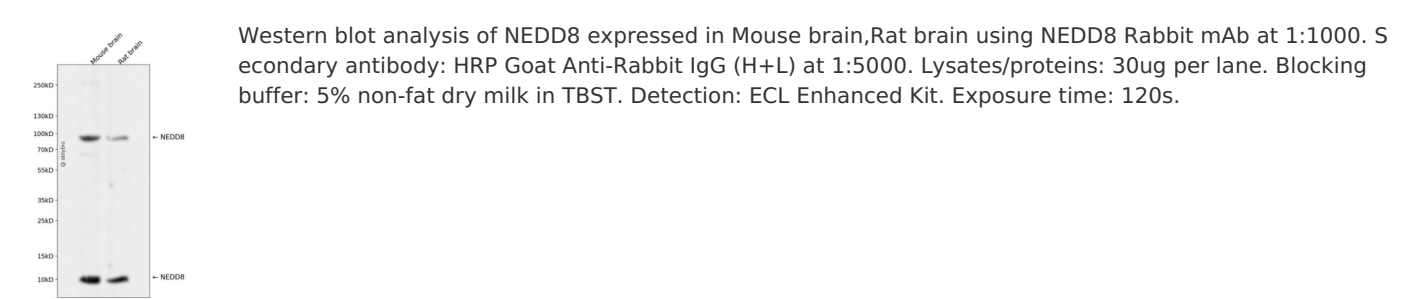
抗原信息

抗原信息	Recombinant fusion protein corresponding to Human NEDD8.
序列	MLIKVKTLTGKEIEIDIEPTDKVERIKERVEEKEGIPPQQQRLIYSGKQMNDEKTAADYKILGGSVLHLVLALRGGGGLRQ

靶点信息

研究背景	Neural Precursor Cell Expressed Developmentally Downregulated Gene 8 (NEDD8), also known as Related to Ubiquitin 1 (Rub1), is a 6-8 kDa member of the Ubiquitin family of proteins. Human NEDD8 is activated by a distinct NEDD8-activating (E1) enzyme, a heterodimeric complex composed of APPBP1 and UBA3 subunits. Activated NEDD8 is subsequently transferred to the UBE2M/Ubc12 or UBE2F NEDD8-conjugating (E2) enzymes. Through a process termed neddylation, the ROC1/Rbx1 RING Finger E3 ligase transfers NEDD8 to specific substrates. NEDD8 plays a critical regulatory role in cell proliferation and dysregulation of the NEDD8 pathway has been associated with several cancer pathologies.
基因ID	4738
基因名	NEDD8
Swiss	Q15843
别名	NEDD8;NEDD-8

产品验证



实验步骤

访问官网浏览详情: www.ablybio.cn