

S100A4 Rabbit mAb

货号: B29006

产品信息

反应	Human,Mouse,Rat
宿主	Rabbit
克隆性	Monoclonal
预测反应	
应用	WB IHC IF/ICC IP FC
推荐浓度	WB: 1:500 - 1:2000 IHC: 1:50 - 1:200 IF/ICC: 1:50 - 1:200 IP: 1:20 - 1:50 FC: 1:20 - 1:50
理论分子量	12kDa
实测分子量	12kDa
形式	Liquid
保存条件	Store at -20°C. Avoid freeze / thaw cycles. Buffer: PBS with 0.75% BSA,50% glycerol,pH7.3.
偶联物	Unconjugated
阳性对照	HeLa,A-549,A375,NIH/3T3,Rat heart
细胞定位	extracellular exosome,extracellular region,extracellular space,neuron projection,nucleus,perinuclear region of cytoplasm
纯化	Affinity purification

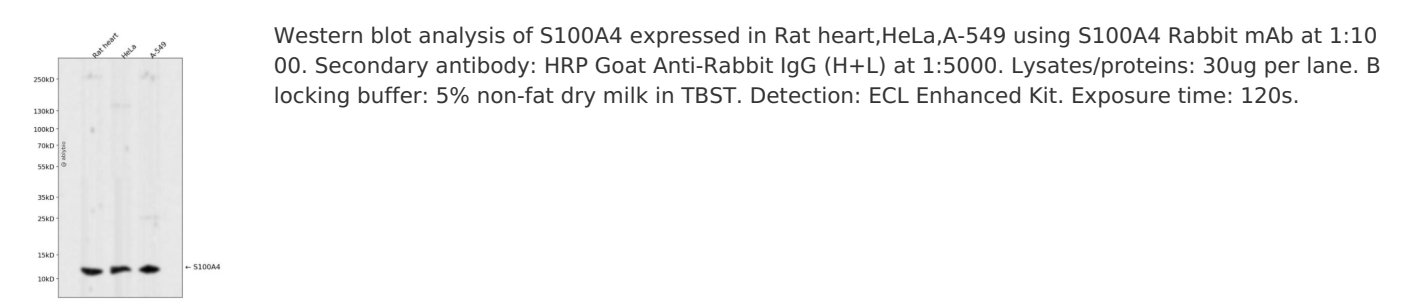
抗原信息

抗原信息	Recombinant fusion protein corresponding to Human S100A4.
序列	ACPLEKALDVMVSTFHKYSGKEGDKFKLNKSELKELLTRELP SFLGKRTDEAA FQKLMSNLDSNRDNEVDFQEYCVFLSCI AMMCNEFFEGFPDKQPRKK

靶点信息

研究背景	The protein encoded by this gene is a member of the S100 family of proteins containing 2 EF-hand calcium-binding motifs. S100 proteins are localized in the cytoplasm and/or nucleus of a wide range of cells, and are involved in the regulation of a number of cellular processes such as cell cycle progression and differentiation. S100 genes include at least 13 members which are located as a cluster on chromosome 1q21. This protein may function in motility, invasion, and tubulin polymerization. Chromosomal rearrangements and altered expression of this gene have been implicated in tumor metastasis. Multiple alternatively spliced variants, encoding the same protein, have been identified. [provided by RefSeq, Jul 2008]
基因ID	6275
基因名	S100A4
Swiss	P26447
别名	18A2;42A;CAPL;FSP1;MTS1;P9KA;PEL98;S100A4

产品验证



实验步骤

访问官网浏览详情: www.ablybio.cn