

Bmf Rabbit mAb

货号: B29002

产品信息

反应	Human,Mouse,Rat
宿主	Rabbit
克隆性	Monoclonal
预测反应	
应用	WB FC
推荐浓度	WB: 1:500 - 1:2000 FC: 1:20 - 1:50
理论分子量	14kDa/17kDa/20kDa
实测分子量	24kDa
形式	Liquid
保存条件	Store at -20°C. Avoid freeze / thaw cycles. Buffer: PBS with 0.75% BSA,50% glycerol,pH7.3.
偶联物	Unconjugated
阳性对照	U-937,SW480,Mouse liver,Mouse lung,Mouse spleen,Mouse ovary,Rat liver
细胞定位	cytosol,mitochondrial outer membrane,plasma membrane
纯化	Affinity purification

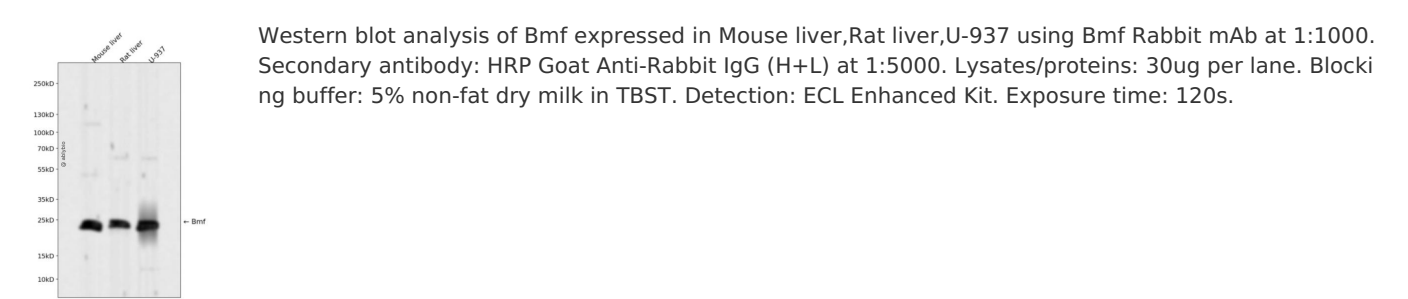
抗原信息

抗原信息	Recombinant fusion protein corresponding to Human Bmf.
序列	MEPSQCVEELEDDVFQPEDGEPVTQPGSLLSADLFAQSLLDCPLSRLQLFPLTHCCGPGLRPTSQEDKATQTLSPASPSQ GVMLPCGVTEEPQRLFYGNAGYRLPLPASFPVLPIGEQQPEGQWQHQAEVQIARKLQCIADQFHRLHVQQHQQNQNRV WWQILLFLHNLALNGEENRNGAGPR

靶点信息

研究背景	The protein encoded by this gene belongs to the BCL2 protein family. BCL2 family members form hetero- or homodimers and act as anti- or pro-apoptotic regulators that are involved in a wide variety of cellular activities. This protein contains a single BCL2 homology domain 3 (BH3), and has been shown to bind BCL2 proteins and function as an apoptotic activator. This protein is found to be sequestered to myosin V motors by its association with dynein light chain 2, which may be important for sensing intracellular damage and triggering apoptosis. Alternatively spliced transcript variants encoding different isoforms have been identified.
基因ID	90427
基因名	BMF
Swiss	Q96LC9
别名	BMF

产品验证



实验步骤

访问官网浏览详情: www.ablybio.cn