

PAR2 Rabbit mAb

货号: B28958

产品信息

反应	Human,Mouse,Rat
宿主	Rabbit
克隆性	Monoclonal
预测反应	
应用	WB IHC IF/ICC FC
推荐浓度	WB: 1:500 - 1:2000 IHC: 1:50 - 1:200 IF/ICC: 1:50 - 1:200 FC: 1:20 - 1:50
理论分子量	55kDa
实测分子量	55kDa
形式	Liquid
保存条件	Store at -20°C. Avoid freeze / thaw cycles. Buffer: PBS with 0.75% BSA,50% glycerol,pH7.3.
偶联物	Unconjugated
阳性对照	HCT116,HepG2,BxPC-3,Mouse large intestine,Rat large intestine
细胞定位	Cell membrane,Multi-pass membrane protein
纯化	Affinity purification

抗原信息

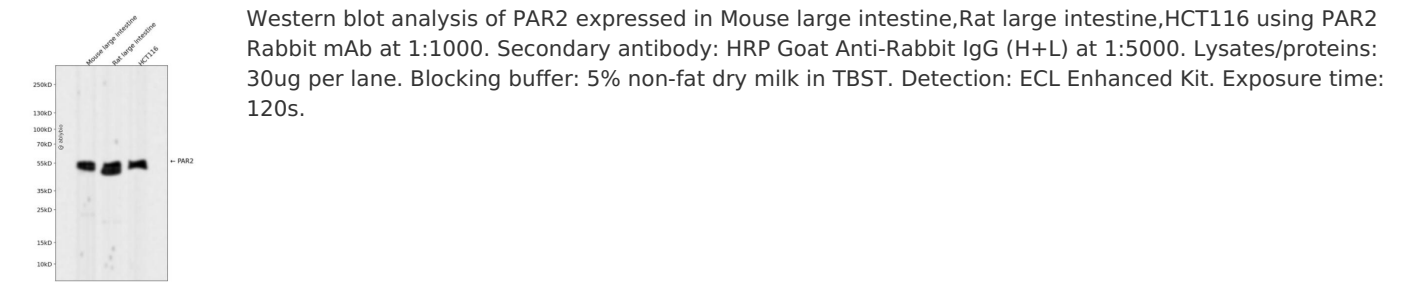
抗原信息	Recombinant fusion protein corresponding to Human PAR2.
序列	ICFTPSNLLLVVHYFLIKSQGQSHVYALYIVALCLSTLNSCIDPFVYFVSHDFRDHAKNALLCRSVRTVKMQVSLTSKKHS RKSSSYSSSSTTVKTSY

靶点信息

研究背景	This gene encodes a member of the G-protein coupled receptor 1 family of proteins. The encoded cell surface receptor is activated through proteolytic cleavage of its extracellular amino terminus, resulting in a new amino terminus that acts as a tethered ligand that binds to an extracellular loop domain. Activation of the receptor has been shown to stimulate vascular smooth muscle relaxation, dilate blood vessels, increase blood flow, and lower blood pressure. This protein is also important in the inflammatory response, as well as innate and adaptive immunity. [provided by RefSeq, Jun 2016]
------	--

基因ID	2150
基因名	F2RL1
Swiss	P55085
别名	GPR11; PAR2

产品验证



实验步骤

访问官网浏览详情: www.ablybio.cn