

Phospho-ErbB3 (Y1222) Rabbit mAb

货号: B28956

产品信息

反应	Human
宿主	Rabbit
克隆性	Monoclonal
预测反应	
应用	WB IF/ICC IP
推荐浓度	WB: 1:500 - 1:2000 IF/ICC: 1:50 - 1:200 IP: 1:20 - 1:50
理论分子量	20kDa/36kDa/77kDa/141kDa/148kDa
实测分子量	185kDa
形式	Liquid
保存条件	Store at -20°C. Avoid freeze / thaw cycles. Buffer: PBS with 0.75% BSA,50% glycerol,pH7.3.
偶联物	Unconjugated
阳性对照	A-431
细胞定位	Cell membrane,Secreted,Single-pass type I membrane protein
纯化	Affinity purification

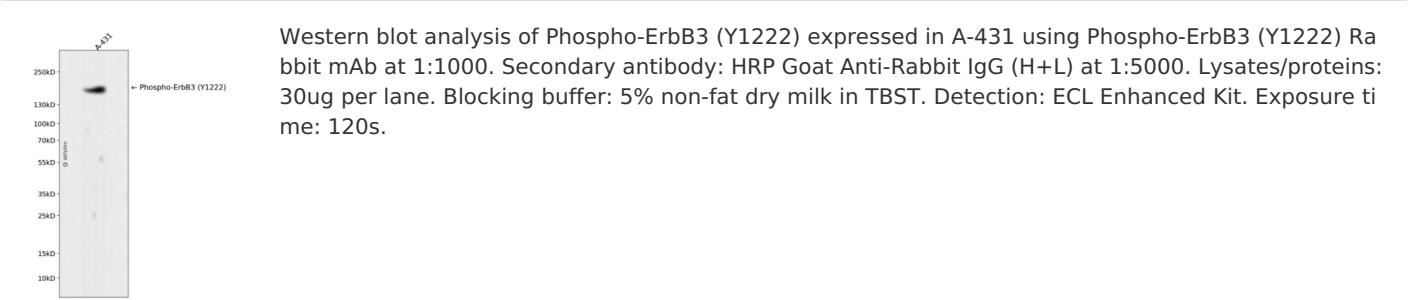
抗原信息

抗原信息	Recombinant fusion protein corresponding to Human Phospho-ErbB3 (Y1222).
序列	PDYWH

靶点信息

研究背景	This gene encodes a member of the epidermal growth factor receptor (EGFR) family of receptor tyrosine kinases. This membrane-bound protein has a neuregulin binding domain but not an active kinase domain. It therefore can bind this ligand but not convey the signal into the cell through protein phosphorylation. However, it does form heterodimers with other EGF receptor family members which do have kinase activity. Heterodimerization leads to the activation of pathways which lead to cell proliferation or differentiation. Amplification of this gene and/or overexpression of its protein have been reported in numerous cancers, including prostate, bladder, and breast tumors. Alternate transcriptional splice variants encoding different isoforms have been characterized. One isoform lacks the intermembrane region and is secreted outside the cell. This form acts to modulate the activity of the membrane-bound form. Additional splice variants have also been reported, but they have not been thoroughly characterized.
基因ID	2065
基因名	ERBB3
Swiss	P21860
别名	ERBB3;ErbB-3;HER3;LCCS2;MDA-BF-1;c-erbB-3;c-erbB3;erbB3-S;p180-ErbB3;p45-sErbB3;p85-sErbB3

产品验证



实验步骤

访问官网浏览详情: www.ablybio.cn