

PSMB10 Rabbit mAb

货号: **B28848**

产品信息

反应	Human,Mouse,Rat
宿主	Rabbit
克隆性	Monoclonal
预测反应	
应用	WB IHC
推荐浓度	WB: 1:500 - 1:2000 IHC: 1:50 - 1:200
理论分子量	28kDa
实测分子量	27kDa
形式	Liquid
保存条件	Store at -20°C. Avoid freeze / thaw cycles. Buffer: PBS with 0.75% BSA,50% glycerol,pH7.3.
偶联物	Unconjugated
阳性对照	THP-1
细胞定位	Cytoplasm,Nucleus
纯化	Affinity purification

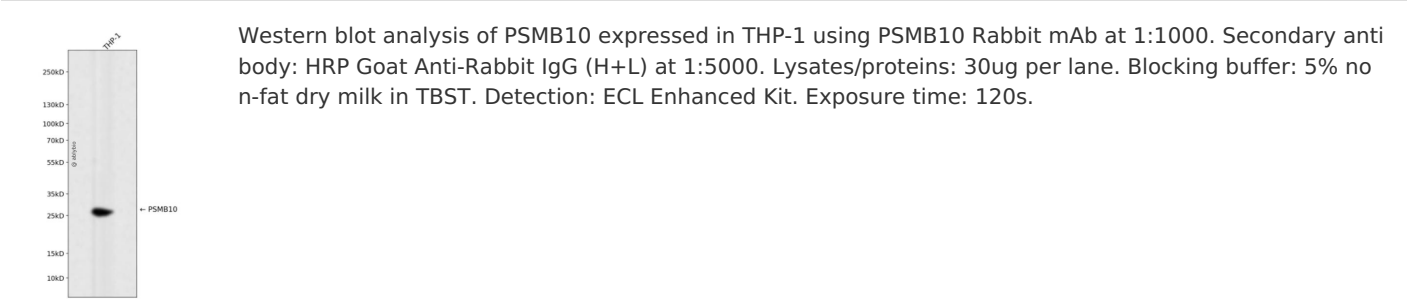
抗原信息

抗原信息	Recombinant fusion protein corresponding to Human PSMB10.
序列	MLKPALEPRGGFSFENCQRNASLERVLPGLKVPHARKTGTTIAGLVFQDGVILGADTRATNDSVVADKSCEKIHFIAPKIYC CGAGVAADAEMTTTRMVASKMELHALSTGREPRVATVTRILRQTLFRYQGHVGASLIVGGVDLTGPQLYGVHPHGSYSRLP FTALGSGQDAALAVLEDRFQPNMTLEAAQGLLVEAVTAGILGDLGSGGNVDACVITKTGAKLLRTLSSPTEPVKRSGRYHF VPGTTAVLTQTVKPLTLELVEETVQAMEVE

靶点信息

研究背景	The proteasome is a multicatalytic proteinase complex with a highly ordered ring-shaped 20S core structure. The core structure is composed of 4 rings of 28 non-identical subunits; 2 rings are composed of 7 alpha subunits and 2 rings are composed of 7 beta subunits. Proteasomes are distributed throughout eukaryotic cells at a high concentration and cleave peptides in an ATP/ubiquitin-dependent process in a non-lysosomal pathway. An essential function of a modified proteasome, the immunoproteasome, is the processing of class I MHC peptides. This gene encodes a member of the proteasome B-type family, also known as the T1B family, that is a 20S core beta subunit. Proteolytic processing is required to generate a mature subunit. Expression of this gene is induced by gamma interferon, and this gene product replaces catalytic subunit 2 (proteasome beta 7 subunit) in the immunoproteasome.
基因ID	5699
基因名	PSMB10
Swiss	P40306
别名	PSMB10;LMP10;MECL1;beta2i

产品验证



实验步骤

访问官网浏览详情: www.ablybio.cn