

mGluR2 Rabbit mAb

货号: B28805

产品信息

反应	Human,Mouse,Rat
宿主	Rabbit
克隆性	Monoclonal
预测反应	
应用	WB IHC IF/ICC
推荐浓度	WB: 1:500 - 1:2000 IHC: 1:50 - 1:200 IF/ICC: 1:50 - 1:200
理论分子量	95,200kDa
实测分子量	95,200kDa
形式	Liquid
保存条件	Store at -20°C. Avoid freeze / thaw cycles. Buffer: PBS with 0.75% BSA,50% glycerol,pH7.3.
偶联物	Unconjugated
阳性对照	Mouse brain,Rat brain
细胞定位	Cell junction,Cell membrane,Cell projection,Multi-pass membrane protein,dendrite,synapse
纯化	Affinity purification

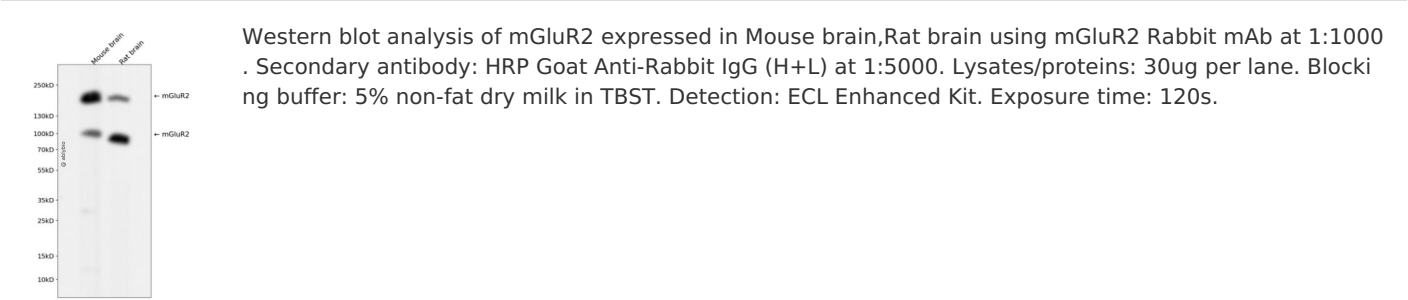
抗原信息

抗原信息	Recombinant fusion protein corresponding to Human mGluR2.
序列	WLAFLPIFYVTSSDYRVQTTTMCVSVLSGSGVVLGCLFAPKLHIILFQPQKNVVSHRAPTSRFGSAAARASSSLGQGSGSQ FVPTVCNGREVVDSTTSSL

靶点信息

研究背景	L-glutamate is the major excitatory neurotransmitter in the central nervous system and activates both ionotropic and metabotropic glutamate receptors. Glutamatergic neurotransmission is involved in most aspects of normal brain function and can be perturbed in many neuropathologic conditions. The metabotropic glutamate receptors are a family of G protein-coupled receptors, that have been divided into 3 groups on the basis of sequence homology, putative signal transduction mechanisms, and pharmacologic properties. Group I includes GRM1 and GRM5 and these receptors have been shown to activate phospholipase C. Group II includes GRM2 and GRM3 while Group III includes GRM4, GRM6, GRM7 and GRM8. Group II and III receptors are linked to the inhibition of the cyclic AMP cascade but differ in their agonist selectivities. Several transcript variants encoding different isoforms have been found for this gene. [provided by RefSeq, Mar 2017]
基因ID	2912
基因名	GRM2
Swiss	Q14416
别名	GLUR2; GPRC1B; MGLUR2; mGlu2

产品验证



实验步骤

访问官网浏览详情: www.ablybio.cn