

C Reactive Protein Rabbit mAb

货号: B28783

产品信息

| | |
|-------|---|
| 反应 | Human |
| 宿主 | Rabbit |
| 克隆性 | Monoclonal |
| 预测反应 | |
| 应用 | WB IHC IP |
| 推荐浓度 | WB: 1:500 - 1:2000 IHC: 1:50 - 1:200 IP: 1:20 - 1:50 |
| 理论分子量 | 10kDa/25kDa |
| 实测分子量 | 25kDa |
| 形式 | Liquid |
| 保存条件 | Store at -20°C. Avoid freeze / thaw cycles. Buffer: PBS with 0.75% BSA,50% glycerol,pH7.3. |
| 偶联物 | Unconjugated |
| 阳性对照 | Human serum,Mouse liver,Mouse lung,Rat spleen |
| 细胞定位 | Secreted |
| 纯化 | Affinity purification |

抗原信息

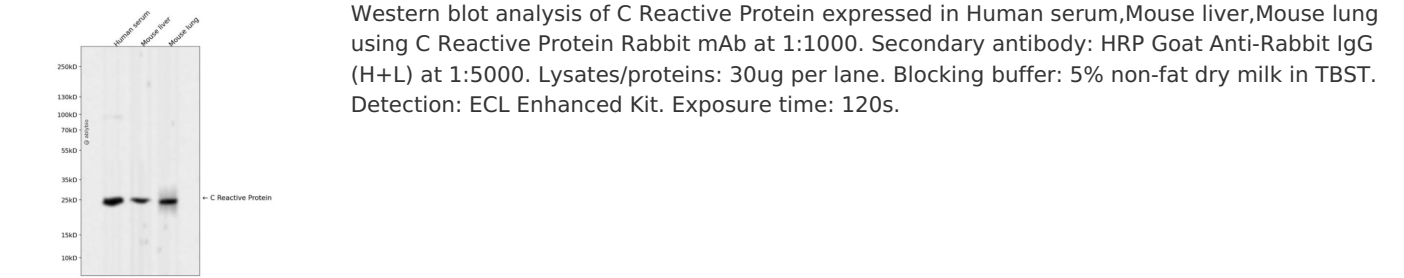
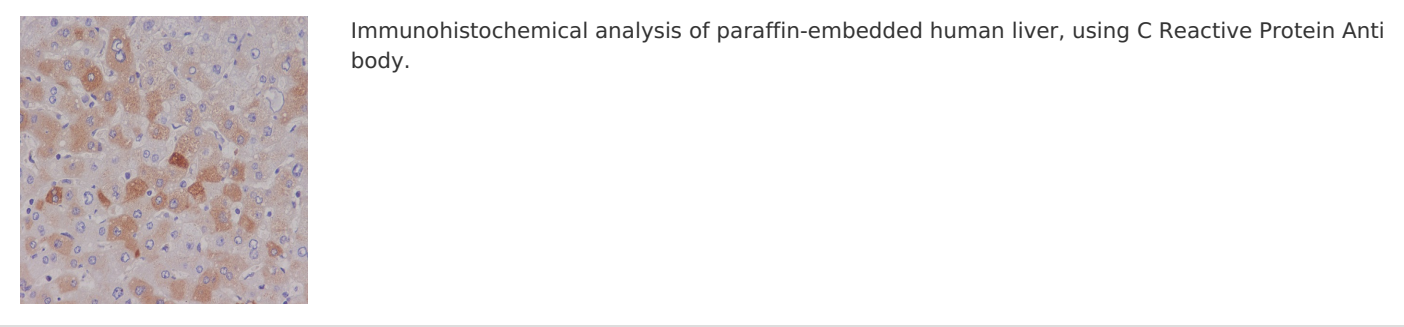
| | |
|------|--|
| 抗原信息 | Recombinant fusion protein corresponding to Human C Reactive Protein. |
| 序列 | ILFEVPEVTVAPVHICTSWESASGIVEFWVDGKPRVRKSLKKGTVGAEASIILGQEQDSFGGNFEGSQSLVGDIGNVNM WDFVLSPDEINTIYLGGPFSP |

靶点信息

| | |
|------|---|
| 研究背景 | The protein encoded by this gene belongs to the pentaxin family. It is involved in several host defense related functions based on its ability to recognize foreign pathogens and damaged cells of the host and to initiate their elimination by interacting with humoral and cellular effector systems in the blood. Consequently, the level of this protein in plasma increases greatly during acute phase response to tissue injury, infection, or other inflammatory stimuli. |
|------|---|

| | |
|-------|----------|
| 基因ID | 1401 |
| 基因名 | CRP |
| Swiss | P02741 |
| 别名 | CRP;PTX1 |

产品验证



实验步骤

访问官网浏览详情: www.ablybio.cn