

ISG15 Rabbit mAb

货号: B28653

产品信息

反应	Human
宿主	Rabbit
克隆性	Monoclonal
预测反应	
应用	WB IHC IF/ICC
推荐浓度	WB: 1:500 - 1:2000 IHC: 1:50 - 1:200 IF/ICC: 1:50 - 1:200
理论分子量	17kDa
实测分子量	15kDa
形式	Liquid
保存条件	Store at -20°C. Avoid freeze / thaw cycles. Buffer: PBS with 0.75% BSA,50% glycerol,pH7.3.
偶联物	Unconjugated
阳性对照	RD,Jurkat
细胞定位	Cytoplasm,Secreted
纯化	Affinity purification

抗原信息

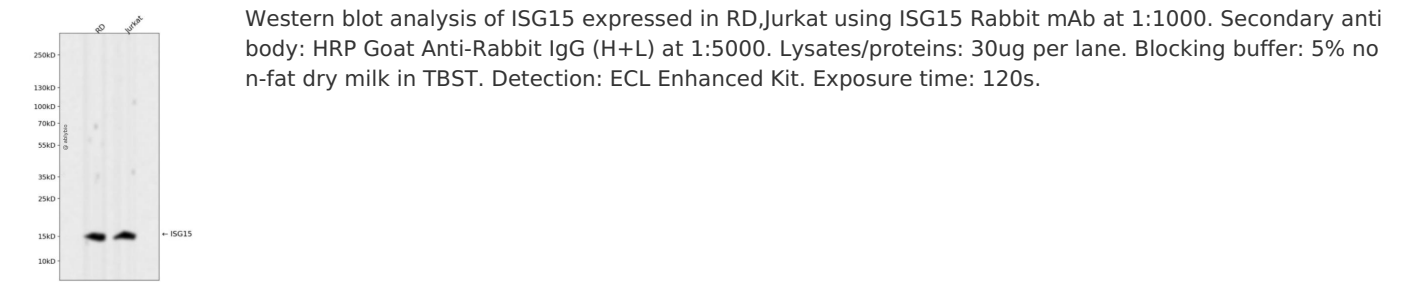
抗原信息	Recombinant fusion protein corresponding to Human ISG15.
序列	MGWDLTVKMLAGNEFQVSLSSSMVSSELKAQITQKIGVHAFQQLAVHPSGVALQDRVPLASQGLGPGSTVLLVVDKC DEPLSILVRNNKGRSSTYEVRLTQTV AHLKQQVSGLEGVQDDLFWLT FEGKPLEDQLPLGEYGLKPLSTVFMNLR LRGGG TEPGGRS

靶点信息

研究背景	The protein encoded by this gene is a ubiquitin-like protein that is conjugated to intracellular target proteins upon activation by interferon-alpha and interferon-beta. Several functions have been ascribed to the encoded protein, including chemotactic activity towards neutrophils, direction of ligated target proteins to intermediate filaments, cell-to-cell signaling, and antiviral activity during viral infections. While conjugates of this protein have been found to be noncovalently attached to intermediate filaments, this protein is sometimes secreted.
------	---

基因ID	9636
基因名	ISG15
Swiss	P05161
别名	ISG15;G1P2;IFI15;IMD38;IP17;UCRP;hUCRP

产品验证



实验步骤

访问官网浏览详情: www.ablybio.cn