

Apolipoprotein E Rabbit mAb

货号: B28624

产品信息

反应	Human,Mouse
宿主	Rabbit
克隆性	Monoclonal
预测反应	
应用	WB IHC IF/ICC IP
推荐浓度	WB: 1:500 - 1:2000 IHC: 1:50 - 1:200 IF/ICC: 1:50 - 1:200 IP: 1:20 - 1:50
理论分子量	36kDa
实测分子量	36kDa
形式	Liquid
保存条件	Store at -20°C. Avoid freeze / thaw cycles. Buffer: PBS with 0.75% BSA,50% glycerol,pH7.3.
偶联物	Unconjugated
阳性对照	Mouse liver,Mouse brain
细胞定位	Secreted
纯化	Affinity purification

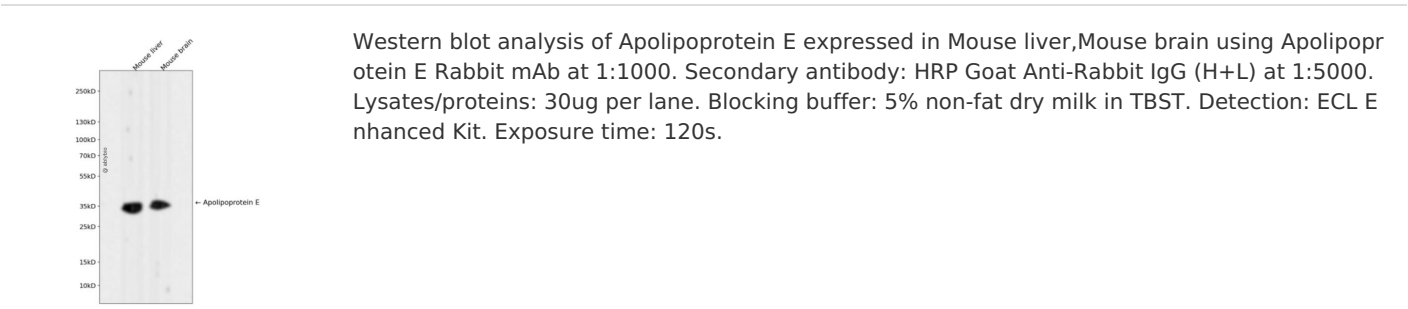
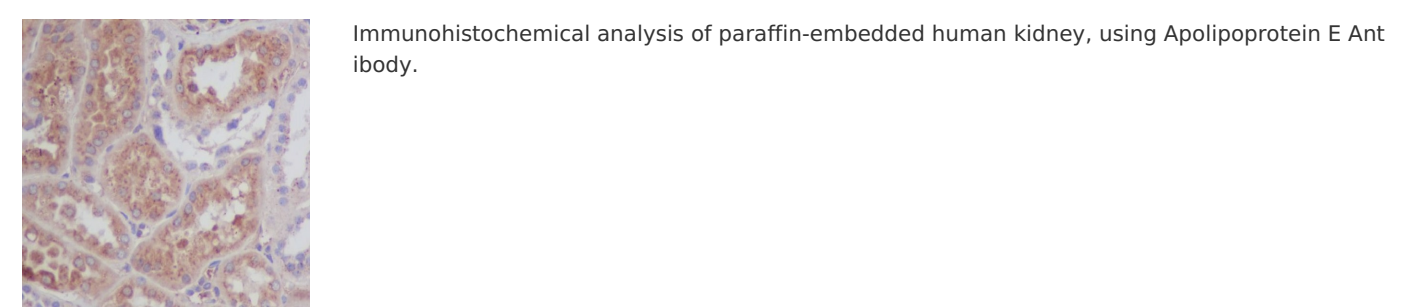
抗原信息

抗原信息	Recombinant fusion protein corresponding to Human Apolipoprotein E.
序列	RSKMEEQTQQIRLQAEIFQARLKGWFEPIVEDMHRQWANLMEKIQASVATNPITPVAQENQ

靶点信息

研究背景	This gene encodes a member of the apolipoprotein A1/A4/E family of proteins. This protein is involved in the transport of lipoproteins in the blood. It binds to a specific liver and peripheral cell receptor, and is essential for the normal catabolism of triglyceride-rich lipoprotein constituents. Homozygous knockout mice for this gene accumulate high levels of cholesterol in the blood and develop atherosclerosis. Different alleles of this gene have been associated with either increased risk or a protective effect for Alzheimer's disease in human patients. This gene maps to chromosome 7 in a cluster with the related apolipoprotein C1, C2 and C4 genes. [provided by RefSeq, Apr 2015]
基因ID	11816
基因名	
Swiss	P02649
别名	APOE;AD2;APO-E;ApoE4;LDLCQ5;LPG;AI255918;Apo-E;ApoE

产品验证



实验步骤

访问官网浏览详情: www.ablybio.cn