

# ATP1A3 Rabbit mAb

货号: B28590

产品信息

反应	Human,Mouse,Rat
宿主	Rabbit
克隆性	Monoclonal
预测反应	
应用	WB
推荐浓度	<b>WB:</b> 1:500 - 1:2000
理论分子量	111kDa/113kDa
实测分子量	100-150kDa
形式	Liquid
保存条件	Store at -20°C. Avoid freeze / thaw cycles. Buffer: PBS with 0.75% BSA,50% glycerol,pH7.3.
偶联物	Unconjugated
阳性对照	Mouse liver,Rat liver
细胞定位	Cell membrane,Multi-pass membrane protein
纯化	Affinity purification

抗原信息

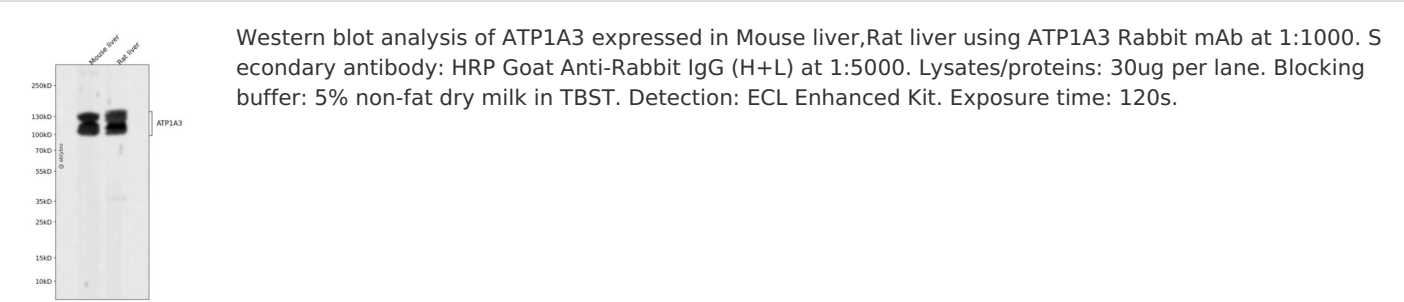
抗原信息	Recombinant fusion protein corresponding to Human ATP1A3.
序列	MGDKKDDKDSPKKNKGKERRDLLDLKKEVAMTEHKMSVEEVCRKYNTDCVQGLTHSKAQE

靶点信息

研究背景	The protein encoded by this gene belongs to the family of P-type cation transport ATPases, and to the sub family of Na <sup>+</sup> /K <sup>+</sup> -ATPases. Na <sup>+</sup> /K <sup>+</sup> -ATPase is an integral membrane protein responsible for establishing and maintaining the electrochemical gradients of Na and K ions across the plasma membrane. These gradients are essential for osmoregulation, for sodium-coupled transport of a variety of organic and inorganic molecules, and for electrical excitability of nerve and muscle. This enzyme is composed of two subunits, a large catalytic subunit (alpha) and a smaller glycoprotein subunit (beta). The catalytic subunit of Na <sup>+</sup> /K <sup>+</sup> -ATPase is encoded by multiple genes. This gene encodes an alpha 3 subunit. Alternatively spliced transcript variants encoding different isoforms have been found for this gene.
------	--

基因ID	478
基因名	ATP1A3
Swiss	P13637
别名	ATP1A3;AHC2;ATP1A1;CAPOS;DYT12;RDP

产品验证



实验步骤

访问官网浏览详情: [www.ablybio.cn](http://www.ablybio.cn)