

Cytochrome P450 4A Rabbit mAb

货号: **B28584**

产品信息

反应	Human,Mouse,Rat
宿主	Rabbit
克隆性	Monoclonal
预测反应	
应用	WB IHC IP
推荐浓度	WB: 1:500 - 1:2000 IHC: 1:50 - 1:200 IP: 1:20 - 1:50
理论分子量	50kDa
实测分子量	50kDa
形式	Liquid
保存条件	Store at -20°C. Avoid freeze / thaw cycles. Buffer: PBS with 0.75% BSA,50% glycerol,pH7.3.
偶联物	Unconjugated
阳性对照	Mouse liver,Rat liver,Rat kidney
细胞定位	apical plasma membrane,cytoplasm
纯化	Affinity purification

抗原信息

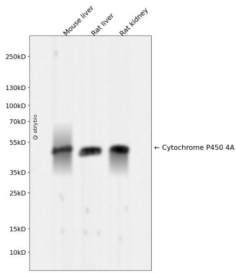
抗原信息	Recombinant fusion protein corresponding to Human Cytochrome P450 4A.
序列	QFPCPPSHWLFQHIQELQQDQELQRIQKVVETFPSACPHWLWGGKVRVQLYDPDYMKVILGRSDPKSHGYSYRFLAPWI GYGLLLLNGQTFQHRRMLTPAF

靶点信息

研究背景	This gene encodes a member of the cytochrome P450 superfamily of enzymes. The cytochrome P450 proteins are monooxygenases which catalyze many reactions involved in drug metabolism and synthesis of cholesterol, steroids and other lipids. This protein localizes to the endoplasmic reticulum and hydroxylates medium-chain fatty acids such as laurate and myristate. Multiple transcript variants have been found for this gene. [provided by RefSeq, Jan 2016]
------	--

基因ID	1579
基因名	CYP4A11
Swiss	Q02928
别名	CP4Y; CYP4A2; CYP4AII

产品验证



Western blot analysis of Cytochrome P450 4A expressed in Mouse liver,Rat liver,Rat kidney using Cytochrome P450 4A Rabbit mAb at 1:1000. Secondary antibody: HRP Goat Anti-Rabbit IgG (H+L) at 1:5000. Lysates/proteins: 30ug per lane. Blocking buffer: 5% non-fat dry milk in TBST. Detection : ECL Enhanced Kit. Exposure time: 120s.

实验步骤

访问官网浏览详情: www.ablybio.cn