

Growth Hormone Rabbit mAb

货号: B28538

产品信息

| | |
|-------|---|
| 反应 | Human |
| 宿主 | Rabbit |
| 克隆性 | Monoclonal |
| 预测反应 | |
| 应用 | WB IHC IP |
| 推荐浓度 | WB: 1:500 - 1:2000 IHC: 1:50 - 1:200 IP: 1:20 - 1:50 |
| 理论分子量 | 19kDa/20kDa/22kDa/24kDa |
| 实测分子量 | 25kDa |
| 形式 | Liquid |
| 保存条件 | Store at -20°C. Avoid freeze / thaw cycles. Buffer: PBS with 0.75% BSA,50% glycerol,pH7.3. |
| 偶联物 | Unconjugated |
| 阳性对照 | human placenta tissue |
| 细胞定位 | Secreted |
| 纯化 | Affinity purification |

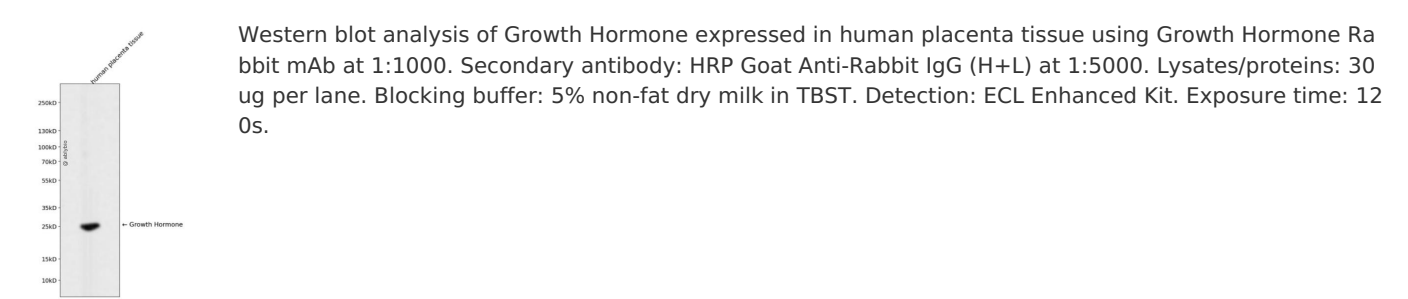
抗原信息

| | |
|------|--|
| 抗原信息 | Recombinant fusion protein corresponding to Human Growth Hormone. |
| 序列 | ELLRISLLLIQSWLEPVQFLRSVFNLSVYGASDSNVYDLLKDLEEGIQTLMGRLEDGSPRTGQIFKQTYSKFDTNSHNDD ALLKNYGLLYCFRKDMDKVE |

靶点信息

| | |
|-------|--|
| 研究背景 | The protein encoded by this gene is a member of the somatotropin/prolactin family of hormones which play an important role in growth control. The gene, along with four other related genes, is located at the growth hormone locus on chromosome 17 where they are interspersed in the same transcriptional orientation; an arrangement which is thought to have evolved by a series of gene duplications. The five genes share a remarkably high degree of sequence identity. Alternative splicing generates additional isoforms of each of the five growth hormones, leading to further diversity and potential for specialization. This particular family member is expressed in the pituitary but not in placental tissue as is the case for the other four genes in the growth hormone locus. Mutations in or deletions of the gene lead to growth hormone deficiency and short stature. |
| 基因ID | 2688 |
| 基因名 | GH1 |
| Swiss | P01241 |
| 别名 | GH1;GH;GH-N;GHB5;GHN;IGHD1B;hGH-N |

产品验证



实验步骤

访问官网浏览详情: www.ablybio.cn