

# Protein C Rabbit mAb

货号: B28514

产品信息

反应	Human
宿主	Rabbit
克隆性	Monoclonal
预测反应	
应用	WB
推荐浓度	<b>WB:</b> 1:500 - 1:2000
理论分子量	52kDa
实测分子量	52kDa
形式	Liquid
保存条件	Store at -20°C. Avoid freeze / thaw cycles. Buffer: PBS with 0.75% BSA,50% glycerol,pH7.3.
偶联物	Unconjugated
阳性对照	HT-29,Mouse liver
细胞定位	Endoplasmic reticulum,Golgi apparatus,Secreted
纯化	Affinity purification

抗原信息

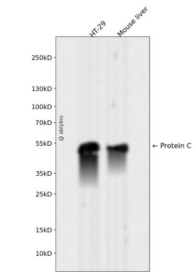
抗原信息	Recombinant fusion protein corresponding to Human Protein C.
序列	IALLHLAQPATLSQTIVPICLPDSGLAERELNQAGQETLVGTGWGYHSSREKEAKRNRTFVLNFIKIPVVPHNECSEVMSNMV SENMLCAGILGDRQDACEGDSGGPMVASFHGTWFLVGLVSWGEGCGLLHNYGVYTKVSRYLDWIHGHIRDKEAPQKS WAP

靶点信息

研究背景	This gene encodes a vitamin K-dependent plasma glycoprotein. The encoded protein is cleaved to its activated form by the thrombin-thrombomodulin complex. This activated form contains a serine protease domain and functions in degradation of the activated forms of coagulation factors V and VIII. Mutations in this gene have been associated with thrombophilia due to protein C deficiency, neonatal purpura fulminans, and recurrent venous thrombosis.[provided by RefSeq, Dec 2009]
基因ID	5624

基因名	PROC
Swiss	P04070
别名	APC; PC; PROC1; THPH3; THPH4

产品验证



Western blot analysis of Protein C expressed in HT-29,Mouse liver using Protein C Rabbit mAb at 1:1000. Secondary antibody: HRP Goat Anti-Rabbit IgG (H+L) at 1:5000. Lysates/proteins: 30ug per lane. Blocking buffer: 5% non-fat dry milk in TBST. Detection: ECL Enhanced Kit. Exposure time: 120s.

实验步骤

访问官网浏览详情: [www.ablybio.cn](http://www.ablybio.cn)