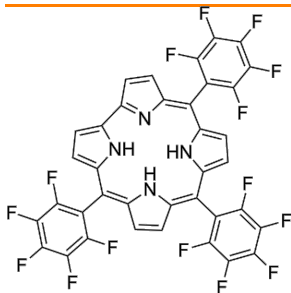


5,10,15-Tri(pentafluorophenyl)corrole

货号: **B28188**

产品信息

生物活性	5,10,15-Tri(pentafluorophenyl)corrole is a biochemical reagent that can be used as a biological material or organic compound for life science related research.
CAS	262280-80-8
中文名称	5,10,15-三(五氟苯基)苯甲酸酯
分子量	796.49
体外研究	
体内研究	
形式	
运输条件	Room temperature in continental US; may vary elsewhere.
保存条件	Please store the product under the recommended conditions in the Certificate of Analysis.
溶解性	
纯度	