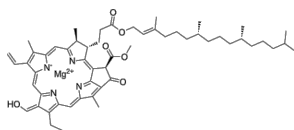


货号: B27637



生物活性	Chlorophyll b is decomposed by chlorophyllase to form pheophytin b. This causes its color to change from green to olive brown. It is involved in the harvesting of light energy and its subsequent conversion into chemical energy during photosynthesis. Along with chlorophyll a, it plays a key role in the ability of plants to adapt to varying light intensities. The visible spectrum that is not absorbed when only chlorophyll a is present in the LHC.
CAS	519-62-0
中文名称	叶绿素 B
分子量	908.48
体外研究	
体内研究	
形式	
运输条件	Room temperature in continental US; may vary elsewhere.
保存条件	Please store the product under the recommended conditions in the Certificate of Analysis.
溶解性	
纯度	