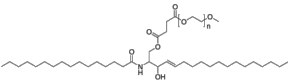


C16 PEG-Ceramide

货号: B27590



产品信息

生物活性	C16 PEG-Ceramide is a polyethylene glycolylated ceramide. C16 PEG-Ceramide can be used for lipid carrier to delivery. C16 PEG-Ceramide induces autophagy . C16 PEG-Ceramide can be used for cancer research.
CAS	212116-78-4
中文名称	
分子量	
体外研究	<p>C16 PEG-Ceramide (0-118.6μM, 24 hours) has cytotoxicity and promotes autophagy in N2a cells.</p> <p>The accuracy of these methods have not been independently confirmed. They are for reference only.</p> <p>Cell Cytotoxicity Assay.</p> <p>Cell Line: N2a cells</p> <p>Concentration: 3.7-118.6 μM</p> <p>Incubation Time:24 hours</p> <p>Result: Inhibits N2a cells activity in a dose-dependent.</p> <p>Western Blot Analysis.</p> <p>Cell Line: N2a cells</p> <p>Concentration: 2.5, 5.0, 10 and 20 μM</p> <p>Incubation Time: 24 hours</p> <p>Result: Increased the LC3-II/LC3-I ratios, reduced the content of WT-Tau and P301L-Tau proteins in the cells.</p>
体内研究	
形式	
运输条件	Room temperature in continental US; may vary elsewhere.
保存条件	Please store the product under the recommended conditions in the Certificate of Analysis.
溶解性	
纯度	