

HAUS6 Rabbit pAb

货号: **B25239**

产品信息

| | |
|-------|--|
| 反应 | Human,Mouse |
| 宿主 | Rabbit |
| 克隆性 | Polyclonal |
| 预测反应 | IF: Homo sapiens |
| 应用 | WB |
| 推荐浓度 | WB: 1:500 - 1:2000 |
| 理论分子量 | 69kDa/104kDa/108kDa |
| 实测分子量 | 109kDa |
| 形式 | Liquid |
| 保存条件 | Store at -20°C. Avoid freeze / thaw cycles. Buffer: PBS with 0.02% sodium azide,50% glycerol,pH7.3. |
| 偶联物 | Unconjugated |
| 阳性对照 | Mouse spleen,Mouse thymus |
| 细胞定位 | Cytoplasm,centrosome,cytoskeleton,microtubule organizing center,spindle |
| 纯化 | Affinity purification |

抗原信息

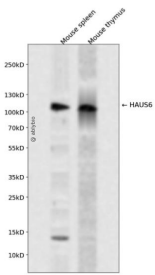
| | |
|------|--|
| 抗原信息 | Recombinant fusion protein containing a sequence corresponding to amino acids 676-955 of human HAU S6 (NP_060115.3). |
| 序列 | DEPPTQNQSDLLNKKVICKQDLECLAFTKLSETSRMETFSPA VGNRIDVMGGSEEEFMKILDHLEVSCNKPSTNKTMLWN SFQISSGISSKSFKDNDGILHETLPEEVGHLSFNSSSSSEANFKLEPNSPMHGGTLLLEDVVGGRQTTPESDFNLQALRSR YEALKKSLSKKREESYLSNSQTPERHKPELSPTPQNVQTD DTLNFLDTCDLHTEHIKPSLRTSIGERKRSLSP LIKFSPVEQRL RTTIACSLGELPNLKEEDILNKSLDAKEPPSDLTR |

靶点信息

| | |
|------|--|
| 研究背景 | The protein encoded by this gene is a subunit of the augmin complex. The augmin complex plays a role in microtubule attachment to the kinetochore and central spindle formation. This protein may have a role in efficient chromosome congression and segregation by promoting microtubule-dependent microtubule amplification. Pseudogenes of this gene are located on chromosomes 7 and 20. Alternative splicing results in multiple transcript variants that encode different protein isoforms. |
|------|--|

| | |
|-------|-------------------|
| 基因ID | 54801 |
| 基因名 | HAUS6 |
| Swiss | Q7Z4H7 |
| 别名 | HAUS6;Dgt6;FAM29A |

产品验证



Western blot analysis of HAUS6 expressed in Mouse spleen, Mouse thymus using HAUS6 Rabbit pAb at 1:1000. Secondary antibody: HRP Goat Anti-Rabbit IgG (H+L) at 1:5000. Lysates/proteins: 30ug per lane. Blocking buffer: 5% non-fat dry milk in TBST. Detection: ECL Enhanced Kit. Exposure time: 120s.

实验步骤

访问官网浏览详情: www.ablybio.cn