

Phospho-ATR-S428 Rabbit pAb

货号: B25181

产品信息

反应	Human,Mouse,Rat
宿主	Rabbit
克隆性	Polyclonal
预测反应	WB: Homo sapiens , Mus musculus
应用	WB IHC IF/ICC
推荐浓度	WB: 1:100 - 1:500 IHC: 1:50 - 1:200 IF/ICC: 1:50 - 1:200
理论分子量	294kDa/297kDa/301kDa
实测分子量	300KDa
形式	Liquid
保存条件	Store at -20°C. Avoid freeze / thaw cycles. Buffer: PBS with 0.05% proclin300,50% glycerol,pH7.3.
偶联物	Unconjugated
阳性对照	293T,NIH/3T3,C6
细胞定位	Chromosome,Nucleus,PML body
纯化	Affinity purification

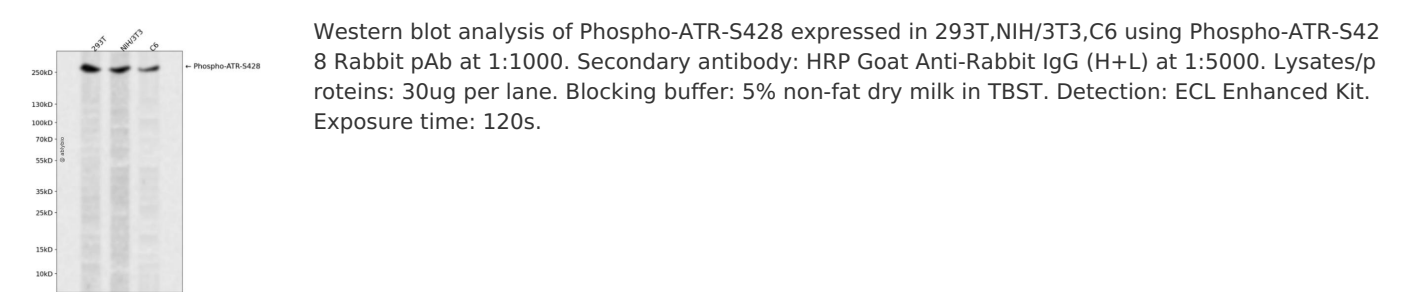
抗原信息

抗原信息	A synthetic phosphorylated peptide around S428 of human ATR (NP_001175.2).
序列	GISPK

靶点信息

研究背景	The protein encoded by this gene belongs the PI3/PI4-kinase family, and is most closely related to ATM, a protein kinase encoded by the gene mutated in ataxia telangiectasia. This protein and ATM share similarity with Schizosaccharomyces pombe rad3, a cell cycle checkpoint gene required for cell cycle arrest and DNA damage repair in response to DNA damage. This kinase has been shown to phosphorylate checkpoint kinase CHK1, checkpoint proteins RAD17, and RAD9, as well as tumor suppressor protein BRCA1. Mutations of this gene are associated with Seckel syndrome. An alternatively spliced transcript variant of this gene has been reported, however, its full length nature is not known. Transcript variants utilizing alternative polyA sites exist.
基因ID	545
基因名	ATR
Swiss	Q13535
别名	ATR;FCTCS;FRP1;MEC1;SCKL;SCKL1

产品验证



实验步骤

访问官网浏览详情: www.ablybio.cn