

# Actin (plant specific) Rabbit pAb

货号: B24683

## 产品信息

反应	Various Plants
宿主	Rabbit
克隆性	Polyclonal
预测反应	
应用	WB
推荐浓度	<b>WB:</b> 1:500 - 1:1000
理论分子量	45kDa
实测分子量	42kDa
形式	Liquid
保存条件	Store at -20°C. Avoid freeze / thaw cycles. Buffer: PBS with 0.02% sodium azide,50% glycerol,pH7.3.
偶联物	Unconjugated
阳性对照	Tobacco,Wheat,Arabidopsis thaliana
细胞定位	
纯化	Affinity purification

## 抗原信息

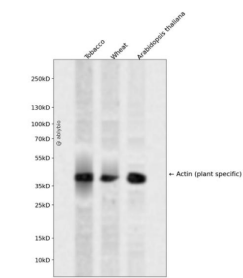
抗原信息	A synthetic peptide corresponding to Actin (plant specific).
序列	

## 靶点信息

研究背景	Actins are highly conserved proteins that are involved in cell motility, structure, and integrity. This actin is a major constituent of the contractile apparatus and one of the two nonmuscle cytoskeletal actins.
基因ID	
基因名	
Swiss	

别名	
----	--

产品验证



Western blot analysis of Actin (plant specific) expressed in Tobacco,Wheat,Arabidopsis thaliana using Actin (plant specific) Rabbit pAb at 1:1000. Secondary antibody: HRP Goat Anti-Rabbit IgG (H+L) at 1:5000. Lysates/proteins: 30ug per lane. Blocking buffer: 5% non-fat dry milk in TBST. Detection: ECL Enhanced Kit. Exposure time: 120s.

实验步骤

访问官网浏览详情: [www.ablybio.cn](http://www.ablybio.cn)