

Papillary renal cell carcinoma Rabbit pAb

货号: B24398

产品信息

反应	Human
宿主	Rabbit
克隆性	Polyclonal
预测反应	
应用	WB
推荐浓度	WB: 1:500 - 1:1000
理论分子量	52kDa
实测分子量	66KDa
形式	Liquid
保存条件	Store at -20°C. Avoid freeze / thaw cycles. Buffer: PBS with 0.05% proclin300,50% glycerol,pH7.3.
偶联物	Unconjugated
阳性对照	HeLa
细胞定位	nuclear speck,nucleoplasm,nucleus
纯化	Affinity purification

抗原信息

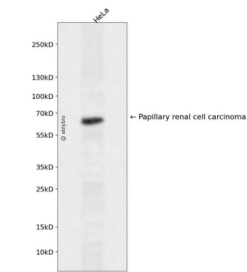
抗原信息	A synthetic peptide of Human Papillary renal cell carcinoma.
序列	

靶点信息

研究背景	This gene encodes a protein that may play a role in pre-mRNA splicing. Chromosomal translocations (X;1) (p11;q21) that result in fusion of this gene to TFE3 (GeneID 7030) have been associated with papillary renal cell carcinoma. A PRCC-TFE3 fusion protein is expressed in affected carcinomas and is likely associated with altered gene transactivation. This fusion protein has also been associated with disruption of the cell cycle.
基因ID	5546

基因名	PRCC
Swiss	Q92733
别名	PRCC; RCCP1; TPRC; proline-rich protein PRCC

产品验证



Western blot analysis of Papillary renal cell carcinoma expressed in HeLa using Papillary renal cell c arcinoma Rabbit pAb at 1:1000. Secondary antibody: HRP Goat Anti-Rabbit IgG (H+L) at 1:5000. Lys ates/proteins: 30ug per lane. Blocking buffer: 5% non-fat dry milk in TBST. Detection: ECL Enhanced Kit. Exposure time: 120s.

实验步骤

访问官网浏览详情: www.ablybio.cn