

# IGF2BP1/IMP1 Rabbit pAb

货号: B24058

产品信息

反应	Human,Mouse,Rat
宿主	Rabbit
克隆性	Polyclonal
预测反应	
应用	WB
推荐浓度	<b>WB:</b> 1:500 - 1:1000
理论分子量	48kDa/63kDa
实测分子量	64KDa
形式	Liquid
保存条件	Store at -20°C. Avoid freeze / thaw cycles. Buffer: PBS with 0.05% proclin300,50% glycerol,pH7.3.
偶联物	Unconjugated
阳性对照	HepG2,293F,NIH/3T3,Mouse brain,Rat kidney
细胞定位	CRD-mediated mRNA stability complex,cytoplasm,cytoplasmic stress granule,cytosol,dendritic spine,growth cone,nucleoplasm,nucleus,P-body,perinuclear region of cytoplasm
纯化	Affinity purification

抗原信息

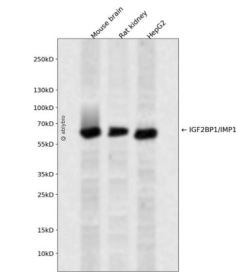
抗原信息	Recombinant protein of human IMP1
序列	

靶点信息

研究背景	This gene encodes a member of the insulin-like growth factor 2 mRNA-binding protein family. The protein encoded by this gene contains four K homology domains and two RNA recognition motifs. It functions by binding to the mRNAs of certain genes, including insulin-like growth factor 2, beta-actin and beta-transducin repeat-containing protein, and regulating their translation. Two transcript variants encoding different isoforms have been found for this gene.
基因ID	10642

基因名	IGF2BP1
Swiss	Q9NZI8
别名	IMP1; ZBP1; CRDBP; IMP-1; CRD-BP; VICKZ1

产品验证



Western blot analysis of IGF2BP1/IMP1 expressed in Mouse brain,Rat kidney,HepG2 using IGF2BP1/IMP1 Rabbit pAb at 1:1000. Secondary antibody: HRP Goat Anti-Rabbit IgG (H+L) at 1:5000. Lysates/proteins: 30ug per lane. Blocking buffer: 5% non-fat dry milk in TBST. Detection: ECL Enhanced Kit. Exposure time: 120s.

实验步骤

访问官网浏览详情: [www.ablybio.cn](http://www.ablybio.cn)