

SLC39A8 Rabbit pAb

货号: B24053

产品信息

反应	Human,Rat
宿主	Rabbit
克隆性	Polyclonal
预测反应	
应用	WB
推荐浓度	WB: 1:1000 - 1:5000
理论分子量	43kDa/48kDa/49kDa
实测分子量	65KDa/90KDa
形式	Liquid
保存条件	Store at -20°C. Avoid freeze / thaw cycles. Buffer: PBS with 0.05% proclin300,50% glycerol,pH7.3.
偶联物	Unconjugated
阳性对照	U-937,Rat liver
细胞定位	apical plasma membrane,basolateral plasma membrane,plasma membrane
纯化	Affinity purification

抗原信息

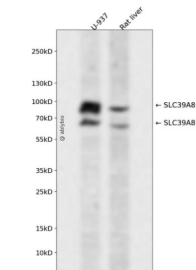
抗原信息	Recombinant protein of human SLC39A8
序列	

靶点信息

研究背景	This gene encodes a member of the SLC39 family of solute-carrier genes, which show structural characteristics of zinc transporters. The encoded protein is glycosylated and found in the plasma membrane and mitochondria, and functions in the cellular import of zinc at the onset of inflammation. It is also thought to be the primary transporter of the toxic cation cadmium, which is found in cigarette smoke. Multiple transcript variants encoding different isoforms have been found for this gene. Additional alternatively spliced transcript variants of this gene have been described, but their full-length nature is not known.
基因ID	64116

基因名	SLC39A8
Swiss	Q9C0K1
别名	SLC39A8;BIGM103;CDG2N;LZT-Hs6;PP3105;ZIP8

产品验证



Western blot analysis of SLC39A8 expressed in U-937,Rat liver using SLC39A8 Rabbit pAb at 1:1000. Secondary antibody: HRP Goat Anti-Rabbit IgG (H+L) at 1:5000. Lysates/proteins: 30ug per lane. Blocking buffer: 5% non-fat dry milk in TBST. Detection: ECL Enhanced Kit. Exposure time: 120s.

实验步骤

访问官网浏览详情: www.ablybio.cn