

# LTBR Rabbit pAb

货号: B23827

## 产品信息

反应	Human,Mouse,Rat
宿主	Rabbit
克隆性	Polyclonal
预测反应	
应用	WB
推荐浓度	<b>WB:</b> 1:500 - 1:1000
理论分子量	44kDa/46kDa
实测分子量	47KDa
形式	Liquid
保存条件	Store at -20°C. Avoid freeze / thaw cycles. Buffer: PBS with 0.05% proclin300,50% glycerol,pH7.3.
偶联物	Unconjugated
阳性对照	Mouse brain
细胞定位	Golgi apparatus,plasma membrane
纯化	Affinity purification

## 抗原信息

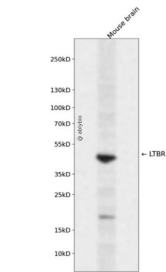
抗原信息	A synthetic peptide corresponding to a sequence within amino acids 100-200 of human LTBR (NP_002333.1).
序列	LCRPCDPVMGLEEIAPCTSKRKTCRCQPGMFCAAWALECTHCELLSDCPPGTEAELKDEVGKGNNHCVPCKAGHFQNTSSPSARCQPHTRCENQGLVEAA

## 靶点信息

研究背景	This gene encodes a member of the tumor necrosis factor receptor superfamily. The major ligands of this receptor include lymphotoxin alpha/beta and tumor necrosis factor ligand superfamily member 14. The encoded protein plays a role in signalling during the development of lymphoid and other organs, lipid metabolism, immune response, and programmed cell death. Activity of this receptor has also been linked to carcinogenesis. Alternatively spliced transcript variants encoding multiple isoforms have been observed.
基因ID	4055

基因名	LTBR
Swiss	P36941
别名	LTBR;CD18;D12S370;LT-BETA-R;TNF-R-III;TNFCR;TNFR-RP;TNFR2-RP;TNFR3;TNFRSF3

产品验证



Western blot analysis of LTBR expressed in Mouse brain using LTBR Rabbit pAb at 1:1000. Secondary anti body: HRP Goat Anti-Rabbit IgG (H+L) at 1:5000. Lysates/proteins: 30ug per lane. Blocking buffer: 5% no n-fat dry milk in TBST. Detection: ECL Enhanced Kit. Exposure time: 120s.

实验步骤

访问官网浏览详情: [www.ablybio.cn](http://www.ablybio.cn)