

S100A11 Rabbit pAb

货号: B23759

产品信息

| | |
|-------|--|
| 反应 | Human,Mouse |
| 宿主 | Rabbit |
| 克隆性 | Polyclonal |
| 预测反应 | |
| 应用 | WB IF/ICC |
| 推荐浓度 | WB: 1:100 - 1:500 IF/ICC: 1:50 - 1:200 |
| 理论分子量 | 11kDa |
| 实测分子量 | 12KDa |
| 形式 | Liquid |
| 保存条件 | Store at -20°C. Avoid freeze / thaw cycles. Buffer: PBS with 0.05% proclin300,50% glycerol,pH7.3. |
| 偶联物 | Unconjugated |
| 阳性对照 | Jurkat,Mouse lung(negative) |
| 细胞定位 | Cytoplasm,Nucleus |
| 纯化 | Affinity purification |

抗原信息

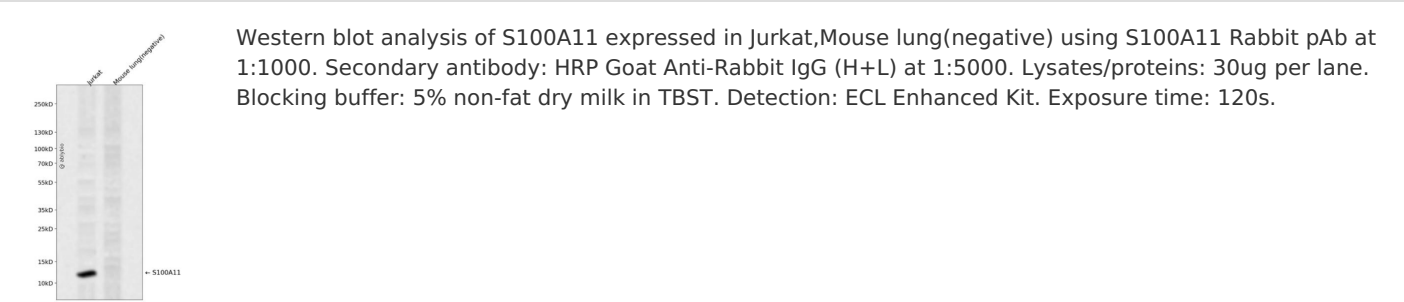
| | |
|------|---|
| 抗原信息 | Recombinant fusion protein containing a sequence corresponding to amino acids 1-105 of human S100A11 (NP_005611.1). |
| 序列 | MAKISSPTETERCIESLIAVFQKYAGKDGYNITLSKTEFLSFMNTELAFTKNQKDPGVLDMMKKLDTNSDGQLDFSEFLNLIGGLAMACHDSFLKAVPSQKRT |

靶点信息

| | |
|------|---|
| 研究背景 | The protein encoded by this gene is a member of the S100 family of proteins containing 2 EF-hand calcium-binding motifs. S100 proteins are localized in the cytoplasm and/or nucleus of a wide range of cells, and are involved in the regulation of a number of cellular processes such as cell cycle progression and differentiation. S100 genes include at least 13 members which are located as a cluster on chromosome 1q21. This protein may function in motility, invasion, and tubulin polymerization. Chromosomal rearrangements and altered expression of this gene have been implicated in tumor metastasis. |
|------|---|

| | |
|-------|------------------------------|
| 基因ID | 6282 |
| 基因名 | S100A11 |
| Swiss | P31949 |
| 别名 | S100A11;HEL-S-43;MLN70;S100C |

产品验证



实验步骤

访问官网浏览详情: www.ablybio.cn