

STRADA Rabbit pAb

货号: B23662

产品信息

反应	Human
宿主	Rabbit
克隆性	Polyclonal
预测反应	
应用	WB
推荐浓度	WB: 1:500 - 1:2000
理论分子量	33kDa/34kDa/38kDa/41kDa/43kDa/48kDa
实测分子量	33kDa/34kDa/38kDa/41kDa/43kDa/48kDa
形式	Liquid
保存条件	Store at -20°C. Avoid freeze / thaw cycles. Buffer: PBS with 0.02% sodium azide,50% glycerol,pH7.3.
偶联物	Unconjugated
阳性对照	
细胞定位	Cytoplasm,Nucleus
纯化	Affinity purification

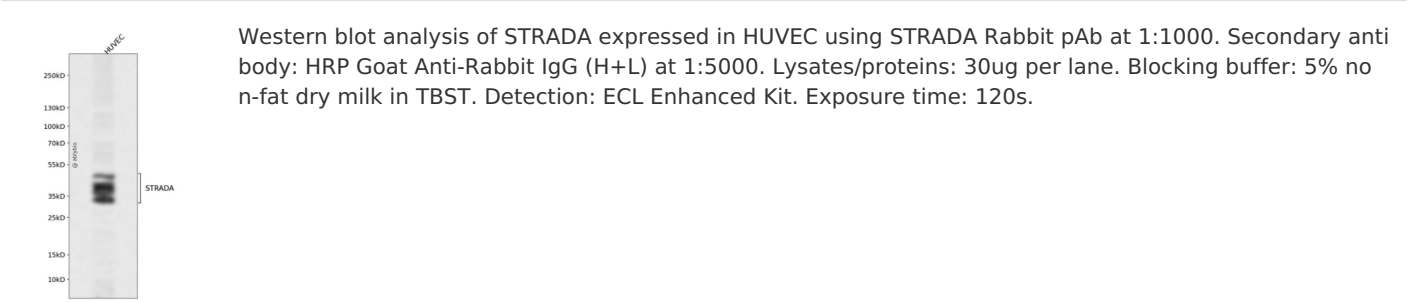
抗原信息

抗原信息	Recombinant fusion protein containing a sequence corresponding to amino acids 25-210 of human STRADA (NP_699166.2).
序列	FLPEGGCYELLTVIGKGFEDLMTVNLARYKPTGEYVTVRRINLEACSNEMVTFLQGELHVSKLFNHPNIVPYRATFIADNELWVVTSMAYGSAKDLICTHFMDGMNELAIAYILQGVLKALDYIHMGYVHRSVKASHILISVDGKVYLSGLRSNLSMISHGQRQRVVHDFPKYSVKVLPWLSPE

靶点信息

研究背景	The protein encoded by this gene contains a STE20-like kinase domain, but lacks several residues that are critical for catalytic activity, so it is termed a 'pseudokinase'. The protein forms a heterotrimeric complex with serine/threonine kinase 11 (STK11, also known as LKB1) and the scaffolding protein calcium binding protein 39 (CAB39, also known as MO25). The protein activates STK11 leading to the phosphorylation of both proteins and excluding STK11 from the nucleus. The protein is necessary for STK11-induced G1 cell cycle arrest. A mutation in this gene has been shown to result in polyhydramnios, megalencephaly, and symptomatic epilepsy (PMSE) syndrome. Multiple transcript variants encoding different isoforms have been found for this gene. Additional transcript variants have been described but their full-length nature is not known.
基因ID	92335
基因名	STRADA
Swiss	Q7RTN6
别名	STRADA; LYK5; NY-BR-96; PMSE; STRAD; Stlk; STE20-related kinase adaptor alpha

产品验证



实验步骤

访问官网浏览详情: www.ablybio.cn