

ABCA6 Rabbit pAb

货号: B23430

产品信息

反应	Human,Mouse,Rat
宿主	Rabbit
克隆性	Polyclonal
预测反应	
应用	WB
推荐浓度	WB: 1:500 - 1:1000
理论分子量	44kDa/183kDa
实测分子量	180KDa
形式	Liquid
保存条件	Store at -20°C. Avoid freeze / thaw cycles. Buffer: PBS with 0.05% proclin300,50% glycerol,pH7.3.
偶联物	Unconjugated
阳性对照	293T,RAW264.7,Mouse liver,Rat liver
细胞定位	Membrane,Multi-pass membrane protein
纯化	Affinity purification

抗原信息

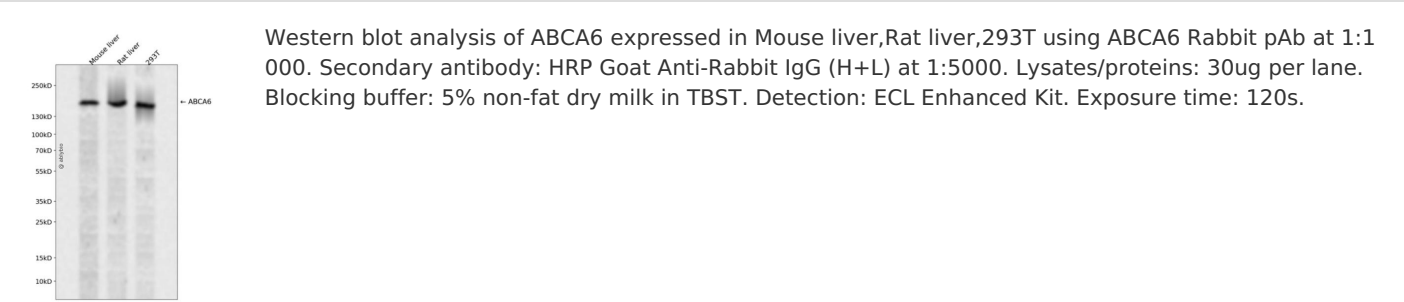
抗原信息	A synthetic peptide corresponding to a sequence within amino acids 1518-1617 of human ABCA6 (NP_525023.2).
序列	SQVTLVHTEILKLPQAAGQERYSSLTYKLPVADVYPLSQTFHKLEAVKHNFNLEEYSLSQCTLEKVFLELSKEQEVGNFDE EIDTTMRWKLLPHSDEP

靶点信息

研究背景	The membrane-associated protein encoded by this gene is a member of the superfamily of ATP-binding cassette (ABC) transporters. ABC proteins transport various molecules across extra- and intracellular membranes. ABC genes are divided into seven distinct subfamilies (ABC1, MDR/TAP, MRP, ALD, OABP, GCN20, and White). This encoded protein is a member of the ABC1 subfamily. Members of the ABC1 subfamily comprise the only major ABC subfamily found exclusively in multicellular eukaryotes. This gene is clustered among 4 other ABC1 family members on 17q24 and may play a role in macrophage lipid homeostasis.
------	--

基因ID	23460
基因名	ABCA6
Swiss	Q8N139
别名	ABCA6;EST155051;Abca6

产品验证



实验步骤

访问官网浏览详情: www.ablybio.cn