

Phospho-Ezrin-Thr567/Radixin-Thr564/Moesin-Thr558 Rabbit pAb

货号: B23112

产品信息

反应	Human
宿主	Rabbit
克隆性	Polyclonal
预测反应	
应用	WB
推荐浓度	WB: 1:500 - 1:1000
理论分子量	69kDa/68kDa/67kDa
实测分子量	75KDa/80KDa
形式	Liquid
保存条件	Store at -20°C. Avoid freeze / thaw cycles. Buffer: PBS with 0.05% proclin300,50% glycerol,pH7.3.
偶联物	Unconjugated
阳性对照	HeLa,A-431
细胞定位	actin cytoskeleton,apical plasma membrane,basolateral plasma membrane,cell projection,ciliary basal body,cortical cytoskeleton,cytoplasm,cytoplasmic side of apical plasma membrane,cytosol,endosome,extracellular exosome,extracellular space,fibrillar center,filopodium,focal adhesion,immunological synapse,microvillus membrane,perinuclear region of cytoplasm,plasma membrane,plasma membrane raft,ruffle membrane
纯化	Affinity purification

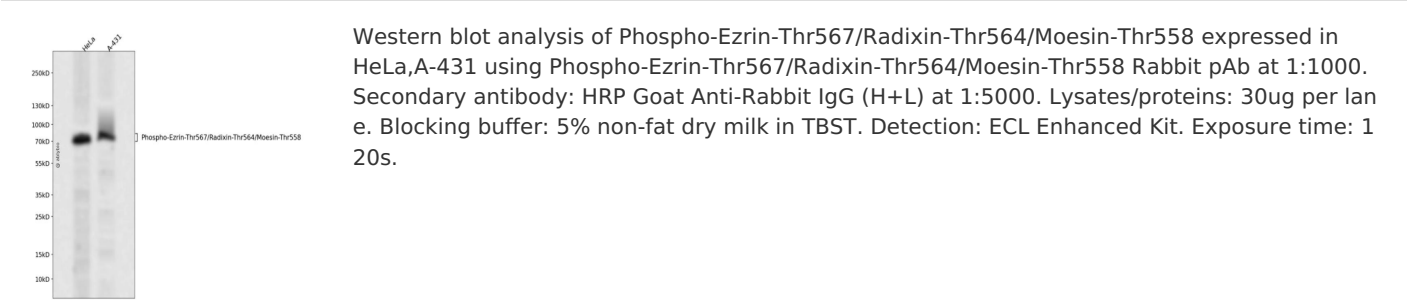
抗原信息

抗原信息	A synthetic phosphorylated peptide around T567 of human Ezrin/Radixin/MoesinEZR (NP_003370.2).
序列	YKTLR

靶点信息

研究背景	The cytoplasmic peripheral membrane protein encoded by this gene functions as a protein-tyrosine kinase substrate in microvilli. As a member of the ERM protein family, this protein serves as an intermediate between the plasma membrane and the actin cytoskeleton. This protein plays a key role in cell surface structure adhesion, migration and organization, and it has been implicated in various human cancers. A pseudogene located on chromosome 3 has been identified for this gene. Alternatively spliced variants have also been described for this gene. Radixin is a cytoskeletal protein that may be important in linking actin to the plasma membrane. It is highly similar in sequence to both ezrin and moesin. The radixin gene has been localized by fluorescence in situ hybridization to 11q23. A truncated version representing a pseudogene (RDXP2) was assigned to Xp21.3. Another pseudogene that seemed to lack introns (RDXP1) was mapped to 11p by Southern and PCR analyses. Multiple alternatively spliced transcript variants encoding different isoforms have been found for this gene. Moesin (for membrane-organizing extension spike protein) is a member of the ERM family which includes ezrin and radixin. ERM proteins appear to function as cross-linkers between plasma membranes and actin-based cytoskeletons. Moesin is localized to filopodia and other membranous protrusions that are important for cell-cell recognition and signaling and for cell movement.
基因ID	7430,5962,4478
基因名	EZR,RDX,MSN
Swiss	P15311,P35241,P26038
别名	CVL; CVIL; VIL2; HEL-S-105; DFNB24; HEL70; IMD50

产品验证



实验步骤

访问官网浏览详情: www.ablybio.cn