

SEC63 Rabbit pAb

货号: B22907

产品信息

反应	Human,Mouse,Rat
宿主	Rabbit
克隆性	Polyclonal
预测反应	
应用	WB
推荐浓度	WB: 1:500 - 1:1000
理论分子量	87kDa
实测分子量	100kDa
形式	Liquid
保存条件	Store at -20°C. Avoid freeze / thaw cycles. Buffer: PBS with 0.05% proclin300,50% glycerol,pH7.3.
偶联物	Unconjugated
阳性对照	HepG2,Mouse liver,Mouse brain,Rat lung
细胞定位	endoplasmic reticulum
纯化	Affinity purification

抗原信息

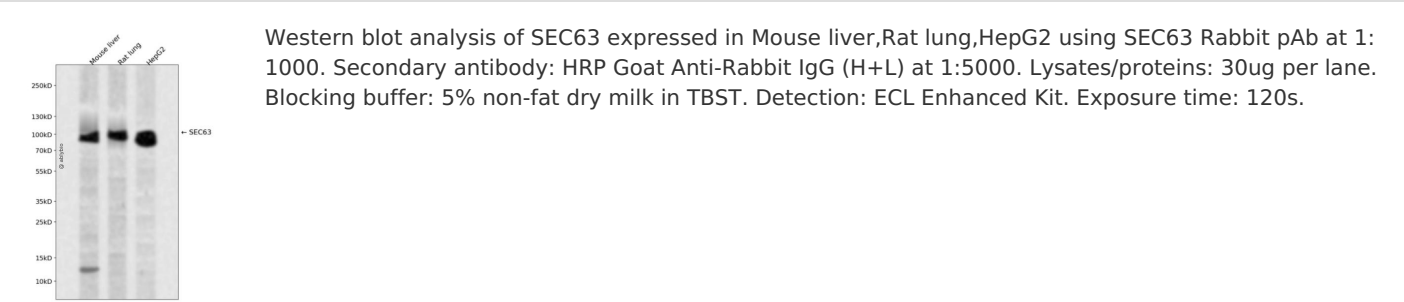
抗原信息	Recombinant fusion protein containing a sequence corresponding to amino acids 595-720 of human SEC63 (NP_009145.1).
序列	RDSDREQDEKQNKDDEAEWQELQQSIQRKERALLETKSKITHPVYSLYFPEEKQEWWWLYIADRKEQTLISMPYHVCTLKDTTEEVELKFPAPGKPGNYQYTVFLRSDSYMGLDQIKPLKLEVHEAK

靶点信息

研究背景	The Sec61 complex is the central component of the protein translocation apparatus of the endoplasmic reticulum (ER) membrane. The protein encoded by this gene and SEC62 protein are found to be associated with ribosome-free SEC61 complex. It is speculated that Sec61-Sec62-Sec63 may perform post-translational protein translocation into the ER. The Sec61-Sec62-Sec63 complex might also perform the backward transport of ER proteins that are subject to the ubiquitin-proteasome-dependent degradation pathway. The encoded protein is an integral membrane protein located in the rough ER.
------	---

基因ID	11231
基因名	SEC63
Swiss	Q9UGP8
别名	ERdj2; PCLD2; SEC63L; DNAJC23; PRO2507

产品验证



实验步骤

访问官网浏览详情: www.ablybio.cn