

# Phospho-EZH2/KMT6-T311 Rabbit pAb

货号: B22824

## 产品信息

反应	Rat
宿主	Rabbit
克隆性	Polyclonal
预测反应	
应用	WB
推荐浓度	<b>WB:</b> 1:500 - 1:1000
理论分子量	79kDa/81kDa/84kDa/85kDa/86kDa
实测分子量	98KDa
形式	Liquid
保存条件	Store at -20°C. Avoid freeze / thaw cycles. Buffer: PBS with 0.05% proclin300,50% glycerol,pH7.3.
偶联物	Unconjugated
阳性对照	C6
细胞定位	Nucleus
纯化	Affinity purification

## 抗原信息

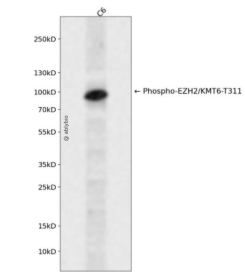
抗原信息	A synthetic phosphorylated peptide around T311 of human EZH2/KMT6 (NP_001190176.1).
序列	KNTET

## 靶点信息

研究背景	This gene encodes a member of the Polycomb-group (PcG) family. PcG family members form multimeric protein complexes, which are involved in maintaining the transcriptional repressive state of genes over successive cell generations. This protein associates with the embryonic ectoderm development protein, the VAV1 oncoprotein, and the X-linked nuclear protein. This protein may play a role in the hematopoietic and central nervous systems. Multiple alternatively spliced transcript variants encoding distinct isoforms have been identified for this gene.
基因ID	2146

基因名	EZH2
Swiss	Q15910
别名	ENX-1;ENX1;EZH1;EZH2b;KMT6;KMT6A;WVS;WVS2;EZH2;KMT6 / EZH2

产品验证



Western blot analysis of Phospho-EZH2/KMT6-T311 expressed in C6 using Phospho-EZH2/KMT6-T311 Rabbit pAb at 1:1000. Secondary antibody: HRP Goat Anti-Rabbit IgG (H+L) at 1:5000. Lysates/proteins: 30ug per lane. Blocking buffer: 5% non-fat dry milk in TBST. Detection: ECL Enhanced Kit. Exposure time: 120s.

实验步骤

访问官网浏览详情: [www.ablybio.cn](http://www.ablybio.cn)