

Phospho-Tau-T181 Rabbit pAb

货号: B22700

产品信息

反应	Human,Mouse
宿主	Rabbit
克隆性	Polyclonal
预测反应	
应用	WB
推荐浓度	WB: 1:100 - 1:500
理论分子量	32-45kDa/78- 80kDa
实测分子量	74kDa
形式	Liquid
保存条件	Store at -20°C. Avoid freeze / thaw cycles. Buffer: PBS with 0.05% proclin300,50% glycerol,pH7.3.
偶联物	Unconjugated
阳性对照	U-251MG,,Mouse brain
细胞定位	
纯化	Affinity purification

抗原信息

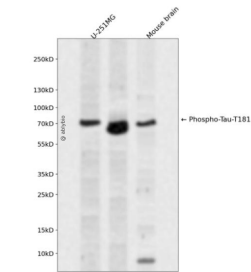
抗原信息	A synthetic phosphorylated peptide around T181 of human Tau (NP_001190181.1).
序列	PKTPP

靶点信息

研究背景	This gene encodes the microtubule-associated protein tau (MAPT) whose transcript undergoes complex, r egulated alternative splicing, giving rise to several mRNA species. MAPT transcripts are differentially expr essed in the nervous system, depending on stage of neuronal maturation and neuron type. MAPT gene m utations have been associated with several neurodegenerative disorders such as Alzheimer's disease, Pic k's disease, frontotemporal dementia, cortico-basal degeneration and progressive supranuclear palsy.
基因ID	4137

基因名	MAPT
Swiss	P10636-5
别名	DDPAC;FTDP-17;MAPTL;MSTD;MTBT1;MTBT2;PPND;PPP1R103;TAU;MAPT;Tau

产品验证



Western blot analysis of Phospho-Tau-T181 expressed in U-251MG,,Mouse brain using Phospho-Tau-T181 Rabbit pAb at 1:1000. Secondary antibody: HRP Goat Anti-Rabbit IgG (H+L) at 1:5000. Lysate s/proteins: 30ug per lane. Blocking buffer: 5% non-fat dry milk in TBST. Detection: ECL Enhanced Ki t. Exposure time: 120s.

实验步骤

访问官网浏览详情: www.ablybio.cn