

Phospho-LRP6-S1490 Rabbit pAb

货号: B22392

产品信息

| | |
|-------|--|
| 反应 | Human |
| 宿主 | Rabbit |
| 克隆性 | Polyclonal |
| 预测反应 | |
| 应用 | WB |
| 推荐浓度 | WB: 1:100 - 1:500 |
| 理论分子量 | 180kDa |
| 实测分子量 | 180KDa |
| 形式 | Liquid |
| 保存条件 | Store at -20°C. Avoid freeze / thaw cycles. Buffer: PBS with 0.01% thiomersal,50% glycerol,pH7.3. |
| 偶联物 | Unconjugated |
| 阳性对照 | HeLa |
| 细胞定位 | Endoplasmic reticulum,Membrane,Single-pass type I membrane protein |
| 纯化 | Affinity purification |

抗原信息

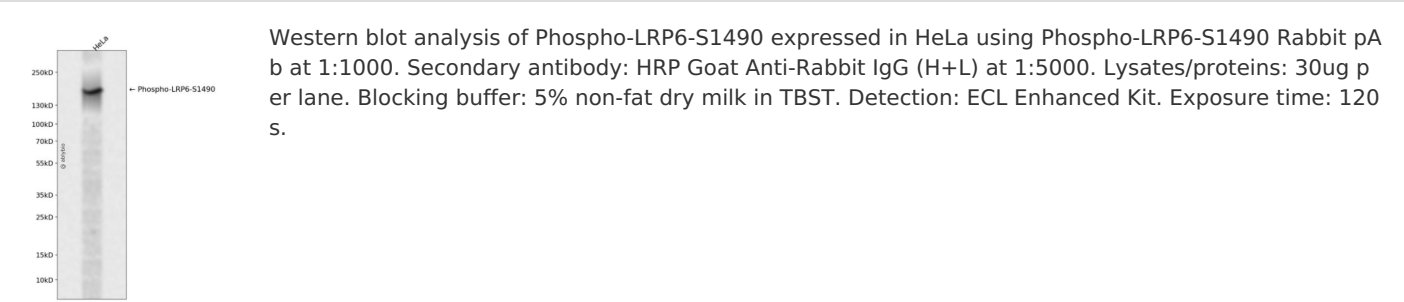
| | |
|------|--|
| 抗原信息 | A synthetic phosphorylated peptide around S1490 of human LRP6 (NP_002327.2). |
| 序列 | PPSPA |

靶点信息

| | |
|------|---|
| 研究背景 | This gene encodes a member of the low density lipoprotein (LDL) receptor gene family. LDL receptors are transmembrane cell surface proteins involved in receptor-mediated endocytosis of lipoprotein and protein ligands. The protein encoded by this gene functions as a receptor or, with Frizzled, a co-receptor for Wnt and thereby transmits the canonical Wnt/beta-catenin signaling cascade. Through its interaction with the Wnt/beta-catenin signaling cascade this gene plays a role in the regulation of cell differentiation, proliferation, and migration and the development of many cancer types. This protein undergoes gamma-secretase dependent RIP- (regulated intramembrane proteolysis) processing but the precise locations of the cleavage sites have not been determined. |
|------|---|

| | |
|-------|--------------------|
| 基因ID | 4040 |
| 基因名 | LRP6 |
| Swiss | O75581 |
| 别名 | LRP6;ADCAD2;STHAG7 |

产品验证



实验步骤

访问官网浏览详情: www.ablybio.cn