

Phospho-PPP1R12A/PPP1R12B/PPP1R12C-T696 Rabbit pAb

货号: B22199

产品信息

反应	Human
宿主	Rabbit
克隆性	Polyclonal
预测反应	
应用	WB
推荐浓度	WB: 1:500 - 1:2000
理论分子量	
实测分子量	140kDa
形式	Liquid
保存条件	Store at -20°C. Avoid freeze / thaw cycles. Buffer: PBS with 0.01% thiomersal,50% glycerol,pH7.3.
偶联物	Unconjugated
阳性对照	Jurkat
细胞定位	A band,actin cytoskeleton,centrosome,contractile fiber,cytoplasm,cytosol,nucleolus,nucleoplasm,plasma membrane,Z disc
纯化	Affinity purification

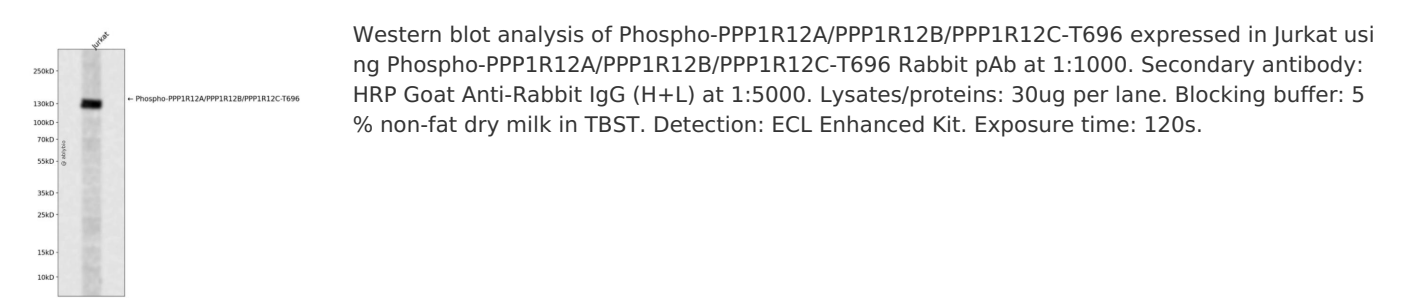
抗原信息

抗原信息	A synthetic phosphorylated peptide around T696 of human PPP1R12A/PPP1R12B/PPP1R12CPPP1R12A (NP_002471.1).
序列	RSTQG

靶点信息

研究背景	Myosin phosphatase target subunit 1, which is also called the myosin-binding subunit of myosin phosphatase, is one of the subunits of myosin phosphatase. Myosin phosphatase regulates the interaction of actin and myosin downstream of the guanosine triphosphatase Rho. The small guanosine triphosphatase Rho is implicated in myosin light chain (MLC) phosphorylation, which results in contraction of smooth muscle and interaction of actin and myosin in nonmuscle cells. The guanosine triphosphate (GTP)-bound, active form of RhoA (GTP.RhoA) specifically interacted with the myosin-binding subunit (MBS) of myosin phosphatase, which regulates the extent of phosphorylation of MLC. Rho-associated kinase (Rho-kinase), which is activated by GTP. RhoA, phosphorylated MBS and consequently inactivated myosin phosphatase. Overexpression of RhoA or activated RhoA in NIH 3T3 cells increased phosphorylation of MBS and MLC. Thus, Rho appears to inhibit myosin phosphatase through the action of Rho-kinase. Several transcript variants encoding different isoforms have been found for this gene. [provided by RefSeq, Jan 2009]
基因ID	4659,4660,54776
基因名	PPP1R12A,PPP1R12B,PPP1R12C
Swiss	O14974,O60237,Q9BZL4
别名	

产品验证



实验步骤

访问官网浏览详情: www.ablybio.cn