

Phospho-TSC2-S1387 Rabbit pAb

货号: B21694

产品信息

| | |
|-------|--|
| 反应 | Human,Mouse,Rat |
| 宿主 | Rabbit |
| 克隆性 | Polyclonal |
| 预测反应 | |
| 应用 | WB |
| 推荐浓度 | WB: 1:500 - 1:2000 |
| 理论分子量 | 25kDa/187-200kDa |
| 实测分子量 | 200kDa |
| 形式 | Liquid |
| 保存条件 | Store at -20°C. Avoid freeze / thaw cycles. Buffer: PBS with 0.01% thiomersal,50% glycerol,pH7.3. |
| 偶联物 | Unconjugated |
| 阳性对照 | C2C12 |
| 细胞定位 | Cytoplasm,Membrane,Peripheral membrane protein |
| 纯化 | Affinity purification |

抗原信息

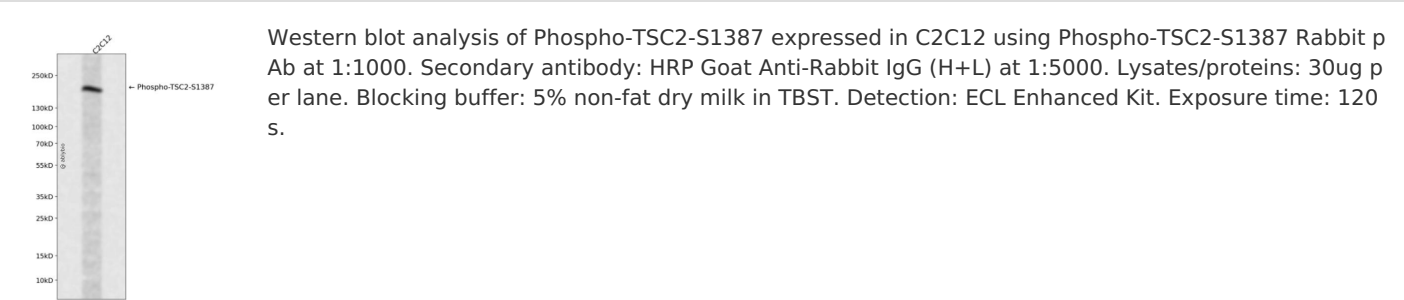
| | |
|------|--|
| 抗原信息 | A synthetic phosphorylated peptide around S1387 of human Tuberin/TSC2 (NP_000539.2). |
| 序列 | SSSSP |

靶点信息

| | |
|------|--|
| 研究背景 | Mutations in this gene lead to tuberous sclerosis complex. Its gene product is believed to be a tumor suppressor and is able to stimulate specific GTPases. The protein associates with hamartin in a cytosolic complex, possibly acting as a chaperone for hamartin. Alternative splicing results in multiple transcript variants encoding different isoforms. [provided by RefSeq, Jul 2008] |
| 基因ID | 7249 |
| 基因名 | TSC2 |

| | |
|-------|------------------------------------|
| Swiss | P49815 |
| 别名 | TSC2; LAM; PPP1R160; TSC4; tuberin |

产品验证



实验步骤

访问官网浏览详情: www.ablybio.cn