

# Phospho- $\alpha$ -Synuclein-Y133 Rabbit pAb

货号: B21668

产品信息

|       |  |
|-------|--|
| 反应    | Human,Mouse  |
| 宿主    | Rabbit   |
| 克隆性   | Polyclonal   |
| 预测反应  |  |
| 应用    | WB   |
| 推荐浓度  | <b>WB:</b> 1:500 - 1:2000  |
| 理论分子量 | 14kDa  |
| 实测分子量 | 18KDa  |
| 形式    | Liquid   |
| 保存条件  | Store at -20°C. Avoid freeze / thaw cycles.<br>Buffer: PBS with 0.01% thiomersal,50% glycerol,pH7.3. |
| 偶联物   | Unconjugated   |
| 阳性对照  | Jurkat,NIH/3T3   |
| 细胞定位  | Cell junction,Cytoplasm,Membrane,Nucleus,Secreted,cytosol,synapse                                    |
| 纯化    | Affinity purification  |

抗原信息

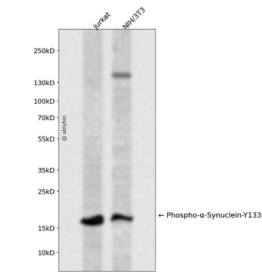
|      |  |
|------|--|
| 抗原信息 | A synthetic phosphorylated peptide around Y133 of human alpha-Synuclein (NP_000336.1). |
| 序列   | EGYQD  |

靶点信息

|      |  |
|------|--|
| 研究背景 | Alpha-synuclein is a member of the synuclein family, which also includes beta- and gamma-synuclein. Synucleins are abundantly expressed in the brain and alpha- and beta-synuclein inhibit phospholipase D2 selectively. SNCA may serve to integrate presynaptic signaling and membrane trafficking. Defects in SNCA have been implicated in the pathogenesis of Parkinson disease. SNCA peptides are a major component of amyloid plaques in the brains of patients with Alzheimer's disease. Alternatively spliced transcripts encoding different isoforms have been identified for this gene. |
| 基因ID | 6622   |

|       |                           |
|-------|---------------------------|
| 基因名   | SNCA                      |
| Swiss | P37840                    |
| 别名    | PD1;NACP;PARK1;PARK4;SNCA |

产品验证



Western blot analysis of Phospho- $\alpha$ -Synuclein-Y133 expressed in Jurkat,NIH/3T3 using Phospho- $\alpha$ -Synuclein-Y133 Rabbit pAb at 1:1000. Secondary antibody: HRP Goat Anti-Rabbit IgG (H+L) at 1:50 00. Lysates/proteins: 30ug per lane. Blocking buffer: 5% non-fat dry milk in TBST. Detection: ECL Enhanced Kit. Exposure time: 120s.

实验步骤

访问官网浏览详情: [www.ablybio.cn](http://www.ablybio.cn)