

# SET1A Rabbit pAb

货号: **B21371**

## 产品信息

反应	Human,Mouse
宿主	Rabbit
克隆性	Polyclonal
预测反应	
应用	WB
推荐浓度	<b>WB:</b> 1:500 - 1:2000
理论分子量	186kDa
实测分子量	300kDa
形式	Liquid
保存条件	Store at -20°C. Avoid freeze / thaw cycles. Buffer: PBS with 0.01% thiomersal,50% glycerol,pH7.3.
偶联物	Unconjugated
阳性对照	HeLa,Jurkat,HepG2,U-251MG,Mouse testis
细胞定位	histone methyltransferase complex,nuclear speck,nucleoplasm,nucleus
纯化	Affinity purification

## 抗原信息

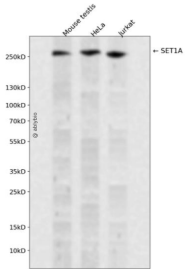
抗原信息	Recombinant protein of human SET1A.
序列	

## 靶点信息

研究背景	The protein encoded by this gene is a component of a histone methyltransferase (HMT) complex that produces mono-, di-, and trimethylated histone H3 at Lys4. Trimethylation of histone H3 at lysine 4 (H3K4me3) is a chromatin modification known to generally mark the transcription start sites of active genes. The protein contains SET domains, a RNA recognition motif domain and is a member of the class V-like SAM-binding methyltransferase superfamily.
基因ID	9739

基因名	SETD1A
Swiss	O15047
别名	Set1;KMT2F;Set1A;SETD1A;SET1A

## 产品验证



Western blot analysis of SET1A expressed in Mouse testis, HeLa, Jurkat using SET1A Rabbit pAb at 1:1000. Secondary antibody: HRP Goat Anti-Rabbit IgG (H+L) at 1:5000. Lysates/proteins: 30ug per lane. Blocking buffer: 5% non-fat dry milk in TBST. Detection: ECL Enhanced Kit. Exposure time: 120s.

## 实验步骤

访问官网浏览详情: [www.ablybio.cn](http://www.ablybio.cn)