

Phospho-p70 S6 kinase-T421/S424 Rabbit pAb

货号: B21313

产品信息

反应	Human,Mouse,Rat
宿主	Rabbit
克隆性	Polyclonal
预测反应	
应用	WB
推荐浓度	WB: 1:500 - 1:2000
理论分子量	51kDa/52kDa/56kDa/59kDa
实测分子量	70kDa
形式	Liquid
保存条件	Store at -20°C. Avoid freeze / thaw cycles. Buffer: PBS with 0.01% thiomersal,50% glycerol,pH7.3.
偶联物	Unconjugated
阳性对照	NIH/3T3
细胞定位	Cell junction,Cytoplasm,Mitochondrion outer membrane,Mitochondrion,Nucleus,synapse,synaptosome
纯化	Affinity purification

抗原信息

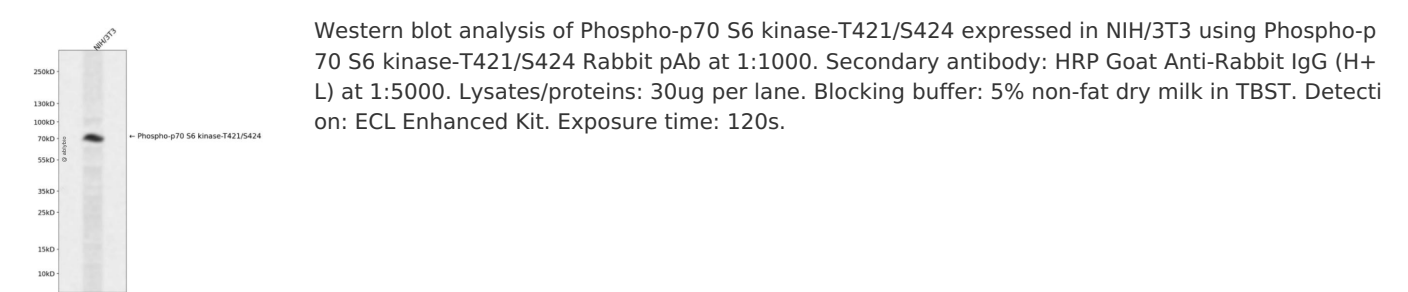
抗原信息	A synthetic phosphorylated peptide around T421 & S424 of human RPS6KB1 (NP_001258989.1).
序列	RTPVSP

靶点信息

研究背景	This gene encodes a member of the ribosomal S6 kinase family of serine/threonine kinases. The encoded protein responds to mTOR (mammalian target of rapamycin) signaling to promote protein synthesis, cell growth, and cell proliferation. Activity of this gene has been associated with human cancer. Alternatively spliced transcript variants have been observed. The use of alternative translation start sites results in isoforms with longer or shorter N-termini which may differ in their subcellular localizations. There are two pseudogenes for this gene on chromosome 17. [provided by RefSeq, Jan 2013]
基因ID	6198

基因名	RPS6KB1
Swiss	P23443
别名	PS6K;S6K;S6K-beta-1;S6K1;STK14A;p70 S6KA;p70(S6K)-alpha;p70-S6K;p70-alpha;P70 S6K;RPS6KB1;p70S6KA

产品验证



实验步骤

访问官网浏览详情: www.ablybio.cn