

Phospho-E-Cadherin-S838/S840 Rabbit pAb

货号: B21279

产品信息

反应	Human
宿主	Rabbit
克隆性	Polyclonal
预测反应	
应用	WB
推荐浓度	WB: 1:500 - 1:2000
理论分子量	90kDa/97kDa
实测分子量	125kDa
形式	Liquid
保存条件	Store at -20°C. Avoid freeze / thaw cycles. Buffer: PBS with 0.01% thiomersal,50% glycerol,pH7.3.
偶联物	Unconjugated
阳性对照	HeLa
细胞定位	Cell junction,Cell membrane,Endosome,Golgi apparatus,Single-pass type I membrane protein,trans-Golgi network
纯化	Affinity purification

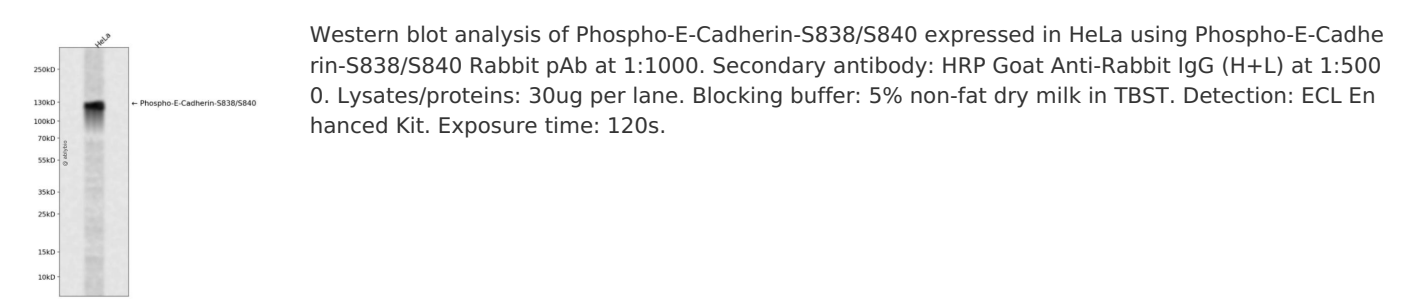
抗原信息

抗原信息	A synthetic phosphorylated peptide around S838 & S840 of human CDH1 (NP_004351.1).
序列	GSGSE

靶点信息

研究背景	This gene encodes a classical cadherin of the cadherin superfamily. Alternative splicing results in multiple transcript variants, at least one of which encodes a preproprotein that is proteolytically processed to generate the mature glycoprotein. This calcium-dependent cell-cell adhesion protein is comprised of five extracellular cadherin repeats, a transmembrane region and a highly conserved cytoplasmic tail. Mutations in this gene are correlated with gastric, breast, colorectal, thyroid and ovarian cancer. Loss of function of this gene is thought to contribute to cancer progression by increasing proliferation, invasion, and/or metastasis. The ectodomain of this protein mediates bacterial adhesion to mammalian cells and the cytoplasmic domain is required for internalization. This gene is present in a gene cluster with other members of the cadherin family on chromosome 16. [provided by RefSeq, Nov 2015]
基因ID	999
基因名	CDH1
Swiss	P12830
别名	Arc-1;CD324;CDHE;ECAD;LCAM;UVO;CDH1;E-Cadherin

产品验证



实验步骤

访问官网浏览详情: www.ablybio.cn