

# MAP3K1 Rabbit pAb

货号: B21229

产品信息

反应	Human
宿主	Rabbit
克隆性	Polyclonal
预测反应	
应用	WB
推荐浓度	<b>WB:</b> 1:500 - 1:2000
理论分子量	164kDa
实测分子量	164kDa
形式	Liquid
保存条件	Store at -20°C. Avoid freeze / thaw cycles. Buffer: PBS with 0.01% thiomersal,50% glycerol,pH7.3.
偶联物	Unconjugated
阳性对照	HeLa
细胞定位	cytoplasm,cytosol
纯化	Affinity purification

抗原信息

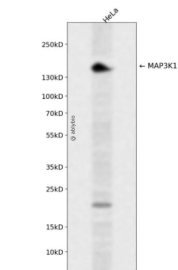
抗原信息	A synthetic peptide corresponding to a sequence within amino acids 1400 to the C-terminus of human MAP3K1 (NP_005912.1).
序列	TGAGEFQGQLLGTIAFMAPEVLRGQQYGRSCDVWSVGCAIEMACAKPPWNAEKHSNHLALIFKIASATTAPSIPSHLSPGLRDVALRCLELQPQDRPPSRELLKHPVFRTTW

靶点信息

研究背景	The protein encoded by this gene is a serine/threonine kinase and is part of some signal transduction cascades, including the ERK and JNK kinase pathways as well as the NF-kappa-B pathway. The encoded protein is activated by autophosphorylation and requires magnesium as a cofactor in phosphorylating other proteins. This protein has E3 ligase activity conferred by a plant homeodomain (PHD) in its N-terminus and phospho-kinase activity conferred by a kinase domain in its C-terminus.
基因ID	4214

基因名	MAP3K1
Swiss	Q13233
别名	MAP3K1;MAPKKK1;MEKK;MEKK 1;MEKK1;SRXY6

产品验证



Western blot analysis of MAP3K1 expressed in HeLa using MAP3K1 Rabbit pAb at 1:1000. Secondary antibody: HRP Goat Anti-Rabbit IgG (H+L) at 1:5000. Lysates/proteins: 30ug per lane. Blocking buffer: 5% non-fat dry milk in TBST. Detection: ECL Enhanced Kit. Exposure time: 120s.

实验步骤

访问官网浏览详情: [www.ablybio.cn](http://www.ablybio.cn)