

# Bak Rabbit pAb

货号: B21201

## 产品信息

反应	Human,Rat
宿主	Rabbit
克隆性	Polyclonal
预测反应	
应用	WB IHC
推荐浓度	<b>WB:</b> 1:500 - 1:2000 <b>IHC:</b> 1:50 - 1:100
理论分子量	16kDa/23kDa
实测分子量	25kDa
形式	Liquid
保存条件	Store at -20°C. Avoid freeze / thaw cycles. Buffer: PBS with 0.01% thiomersal,50% glycerol,pH7.3.
偶联物	Unconjugated
阳性对照	HeLa
细胞定位	Mitochondrion membrane,Single-pass membrane protein
纯化	Affinity purification

## 抗原信息

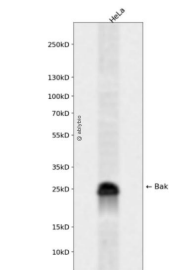
抗原信息	A synthetic peptide corresponding to a sequence within amino acids 1-50 of human Bak (NP_001179.1).
序列	MASGQGPGPPRQECGEPALPSASEEQVAQDTEEVFRSYVFYRHQQEQEAE

## 靶点信息

研究背景	The protein encoded by this gene belongs to the BCL2 protein family. BCL2 family members form oligomers or heterodimers and act as anti- or pro-apoptotic regulators that are involved in a wide variety of cellular activities. This protein localizes to mitochondria, and functions to induce apoptosis. It interacts with and accelerates the opening of the mitochondrial voltage-dependent anion channel, which leads to a loss in membrane potential and the release of cytochrome c. This protein also interacts with the tumor suppressor P53 after exposure to cell stress.
基因ID	578

基因名	BAK1
Swiss	Q16611
别名	BAK1;BAK;BAK-LIKE;BCL2L7

产品验证



Western blot analysis of Bak expressed in HeLa using Bak Rabbit pAb at 1:1000. Secondary antibody: HRP Goat Anti-Rabbit IgG (H+L) at 1:5000. Lysates/proteins: 30ug per lane. Blocking buffer: 5% non-fat dry milk in TBST. Detection: ECL Enhanced Kit. Exposure time: 120s.

实验步骤

访问官网浏览详情: [www.ablybio.cn](http://www.ablybio.cn)