

Pan DiMethyl-lysine Rabbit pAb

货号: B21200

产品信息

反应	Human,Mouse,Rat
宿主	Rabbit
克隆性	Polyclonal
预测反应	
应用	WB
推荐浓度	WB: 1:500 - 1:2000
理论分子量	
实测分子量	17-48KDa
形式	Liquid
保存条件	Store at -20°C. Avoid freeze / thaw cycles. Buffer: PBS with 0.01% thiomersal,50% glycerol,pH7.3.
偶联物	Unconjugated
阳性对照	NIH/3T3,C6,Mouse liver,Rat liver,HeLa,MCF7
细胞定位	
纯化	Affinity purification

抗原信息

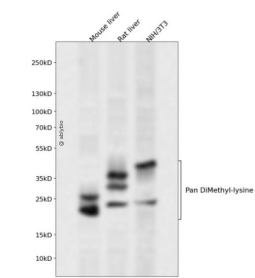
抗原信息	A synthetic peptide corresponding to a sequence containing dimethylated K.
序列	

靶点信息

研究背景	The lysine methylation chemical reaction is the reversible addition of one, two or three methyl groups to the ϵ -nitrogen of a lysine side chain, forming monomethylated, dimethylated and trimethylated derivatives (referred to here as ‘Kme1’, ‘Kme2’ and ‘Kme3’).
基因ID	
基因名	
Swiss	

别名	
----	--

产品验证



Western blot analysis of Pan DiMethyl-lysine expressed in Mouse liver,Rat liver,NIH/3T3 using Pan DiMethyl-lysine Rabbit pAb at 1:1000. Secondary antibody: HRP Goat Anti-Rabbit IgG (H+L) at 1:5000. Lysates/proteins: 30ug per lane. Blocking buffer: 5% non-fat dry milk in TBST. Detection: ECL Enhanced Kit. Exposure time: 120s.

实验步骤

访问官网浏览详情: www.ablybio.cn